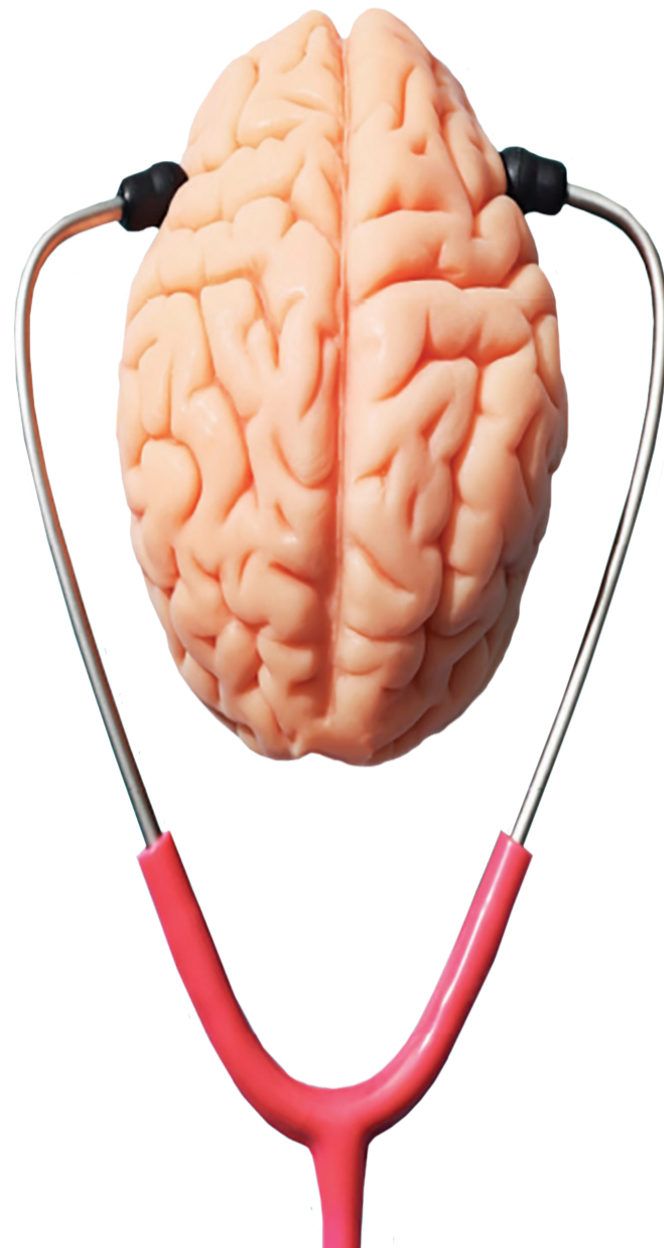


Trauma tūroro need to be screened for concussion

All head, facial or C-Spine injuries, or injuries of two or more of the following:

- Chest
- Spine
- Abdomen
- Limbs



POSSIBLE CAUSES: MVA, MBA, cycle or quad bike accidents, falls, assaults, large animal vs person trauma.

Trauma tūroro referral to occupational therapy

Does your tūroro have two or more body systems injured following trauma? Please refer to occupational therapy for memory assessment as soon as possible.

**Call 021 224 3501 between 9am–4pm
at weekends and public holidays**

Cortex referrals Monday to Friday

For more information go to [majortrauma.nz](https://www.majortrauma.nz)

Te Whatu Ora
Health New Zealand