

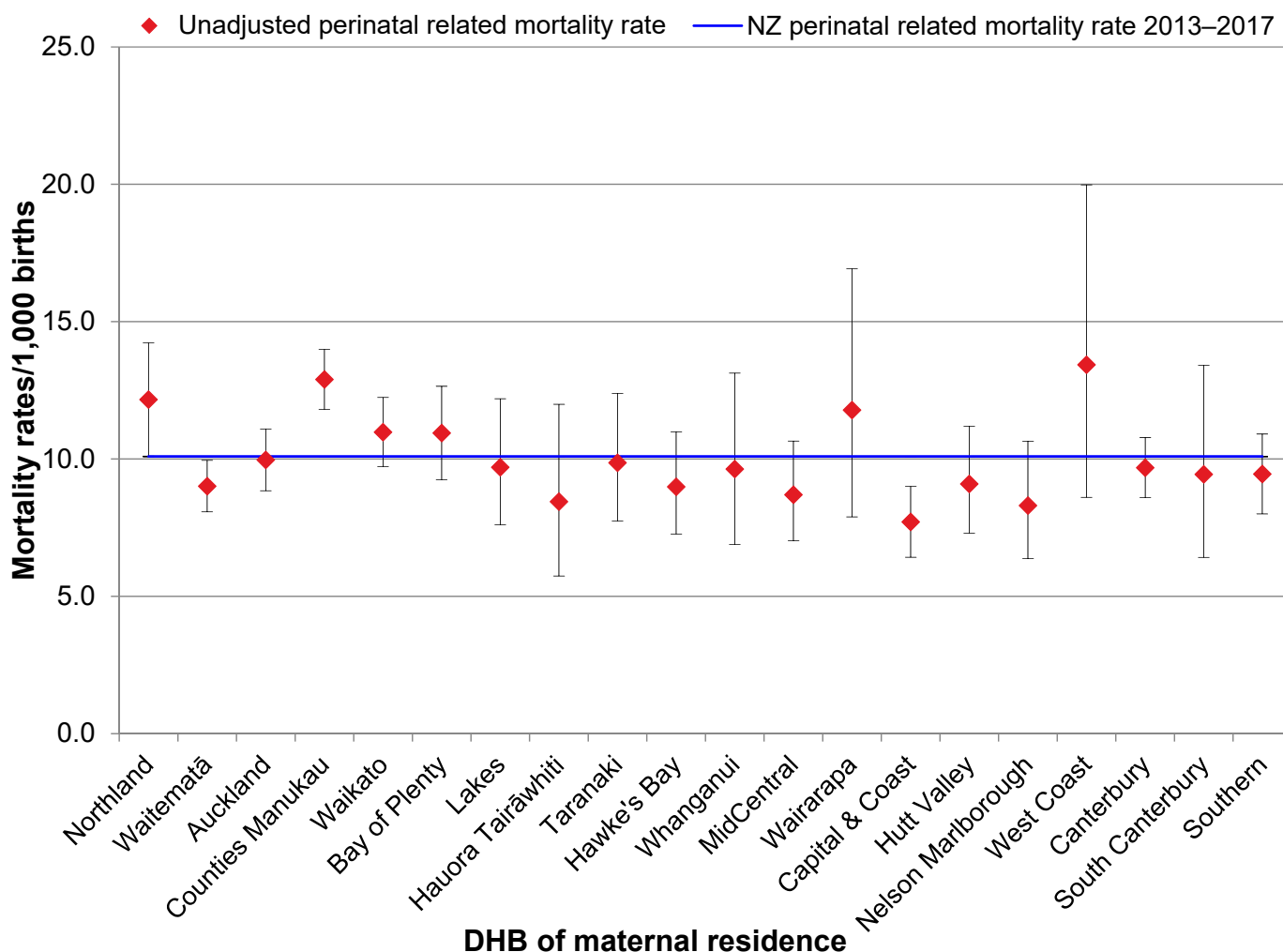
Te mate pēpi | Perinatal mortality

DHB of residence

Variations in rates by DHB may exist for a number of reasons. Mortality rates can be influenced by underlying population characteristics, geographic isolation, resourcing, delivery of care and other factors. Despite this, DHBs are charged with meeting the needs of the population they serve. Furthermore, those DHBs with a rate similar to the national rate may still have groups within their DHBs who do not experience the same level of care and outcomes of others in the DHB region, and a within-DHB assessment of any subgroups that are experiencing worse outcomes could be beneficial.

Perinatal related mortality rates varied by DHB of residence, with Waitematā and Capital & Coast DHBs having rates that were statistically significantly lower than the national rate of 10.09 per 1,000 births. Women living in Northland and Counties Manukau DHBs had perinatal related mortality rates that were statistically significantly higher than the national rate (Figure 3.17 and Table 3.24).

Figure 3.17: Unadjusted perinatal related mortality rates (per 1,000 births) by DHB of residence (mother) compared with New Zealand perinatal related mortality (with 95% CIs) 2013–2017



Sources: Numerator: PMMRC's perinatal data extract 2013–2017; Denominator: MAT births 2013–2017.

Table 3.24: Perinatal related mortality rates (per 1,000 births) by DHB of maternal residence 2013–2017

DHB of maternal residence	Total births		Fetal deaths						Neonatal deaths			Perinatal related deaths (total)		
			Termination of pregnancy			Stillbirths								
	N=301,043		n=679			n=1,535			n=824			n=3,038		
	N	%	n	%	Rate	n	%	Rate	n	%	Rate	n	%	Rate
Northland	11,016	3.7	26	3.8	2.36	75	4.9	6.81	33	4.0	3.02	134	4.4	12.16
Waitematā	39,286	13.0	113	16.6	2.88	160	10.4	4.07	81	9.8	2.08	354	11.7	9.01
Auckland	30,399	10.1	93	13.7	3.06	135	8.8	4.44	75	9.1	2.49	303	10.0	9.97
Counties Manukau	41,713	13.9	98	14.4	2.35	268	17.5	6.42	172	20.9	4.16	538	17.7	12.90
Waikato	26,774	8.9	60	8.8	2.24	149	9.7	5.57	85	10.3	3.20	294	9.7	10.98
Bay of Plenty	14,529	4.8	28	4.1	1.93	77	5.0	5.30	54	6.6	3.74	159	5.2	10.94
Lakes	7,527	2.5	17	2.5	2.26	41	2.7	5.45	15	1.8	2.01	73	2.4	9.70
Hauora Tairāwhiti	3,669	1.2	4	0.6	1.09	19	1.2	5.18	8	1.0	2.19	31	1.0	8.45
Taranaki	7,502	2.5	13	1.9	1.73	39	2.5	5.20	22	2.7	2.95	74	2.4	9.86
Hawke's Bay	10,571	3.5	19	2.8	1.80	55	3.6	5.20	21	2.5	2.00	95	3.1	8.99
Whanganui	4,151	1.4	6	0.9	1.45	20	1.3	4.82	14	1.7	3.39	40	1.3	9.64
MidCentral	10,693	3.6	20	2.9	1.87	46	3.0	4.30	27	3.3	2.54	93	3.1	8.70
Wairarapa	2,461	0.8	3	0.4	1.22	21	1.4	8.53	5	0.6	2.05	29	1.0	11.78
Capital & Coast	17,901	5.9	24	3.5	1.34	74	4.8	4.13	40	4.9	2.25	138	4.5	7.71
Hutt Valley	9,787	3.3	13	1.9	1.33	48	3.1	4.90	28	3.4	2.88	89	2.9	9.09
Nelson Marlborough	7,465	2.5	14	2.1	1.88	30	2.0	4.02	18	2.2	2.43	62	2.0	8.31
West Coast	1,787	0.6	7	1.0	3.92	12	0.8	6.72	5	0.6	2.83	24	0.8	13.43
Canterbury	31,186	10.4	72	10.6	2.31	165	10.7	5.29	65	7.9	2.10	302	9.9	9.68
South Canterbury	3,282	1.1	4	0.6	1.22	13	0.8	3.96	14	1.7	4.29	31	1.0	9.45
Southern	17,140	5.7	43	6.3	2.51	83	5.4	4.84	36	4.4	2.12	162	5.3	9.45
Other*	2,204	0.7	<3	x	-	5	0.3	-	6	0.7	-	13	0.4	-
Total	301,043	100.0	679	100.0	2.26	1,535	100.0	5.10	824	100.0	2.76	3,038	100.0	10.09

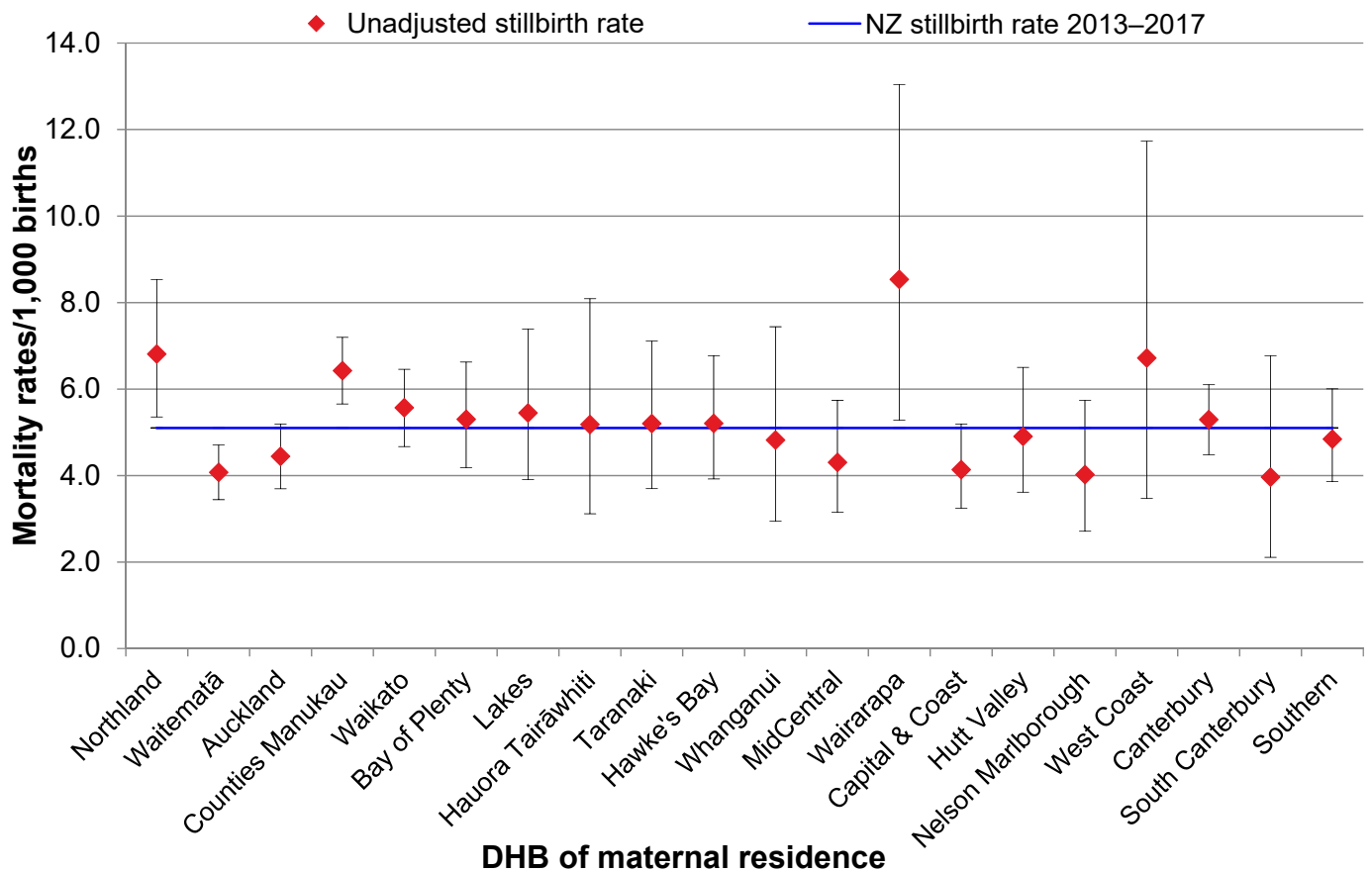
* Other includes Overseas, Unknown and Other.

'x' indicates percentage suppressed due to small numbers.

Sources: Numerator: PMMRC's perinatal data extract 2013–2017; Denominator: MAT births 2013–2017.

There was substantial variation in stillbirth rates by DHB of residence. Compared with the national rate, mothers in Waitematā DHB had a statistically significantly lower rate. Mothers residing in Northland, Counties Manukau and Wairarapa DHBs had a statistically significantly higher rate than the national rate (Figure 3.18).

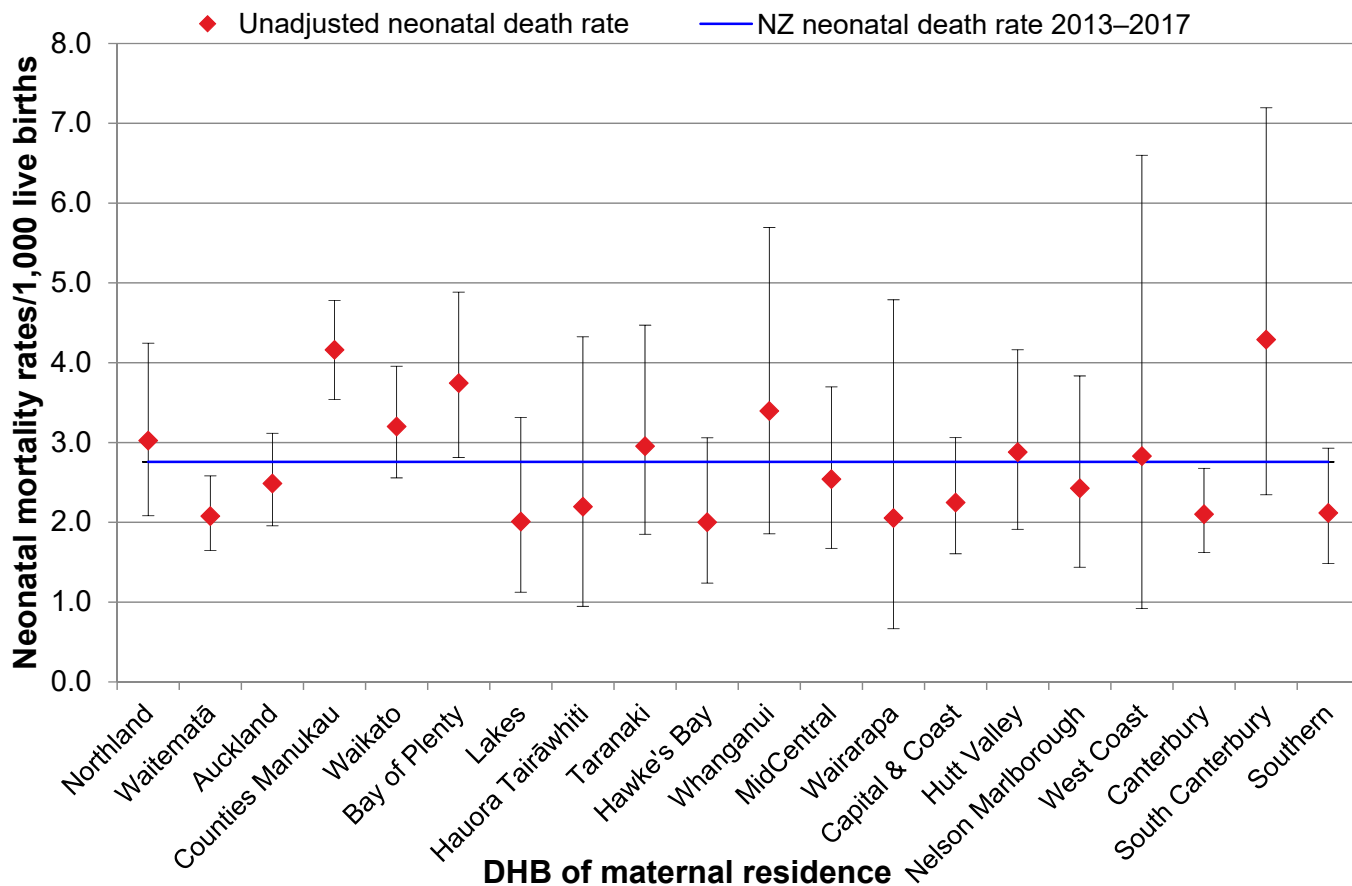
Figure 3.18: Unadjusted stillbirth rates (per 1,000 births) by DHB of residence (mother) compared with average stillbirth rates (with 95% CIs) 2013–2017



Sources: Numerator: PMMRC's perinatal data extract stillbirths only, 2013–2017; Denominator: MAT births 2013–2017.

Due to smaller numbers, the neonatal death rates by DHB of residence are more prone to variation and have wider confidence intervals. When compared with the national rate, Waitematā and Canterbury DHBs had statistically significantly lower rates, while Counties Manukau and Bay of Plenty had statistically significantly higher rates (Figure 3.19).

Figure 3.19: Unadjusted neonatal mortality rates (per 1,000 births) by DHB of residence (mother) compared with New Zealand neonatal mortality (with 95% CIs) 2013–2017



Sources: Numerator: PMMRC's perinatal data extract, neonatal deaths only, 2013–2017; Denominator: MAT births excluding fetal deaths 2013–2017.