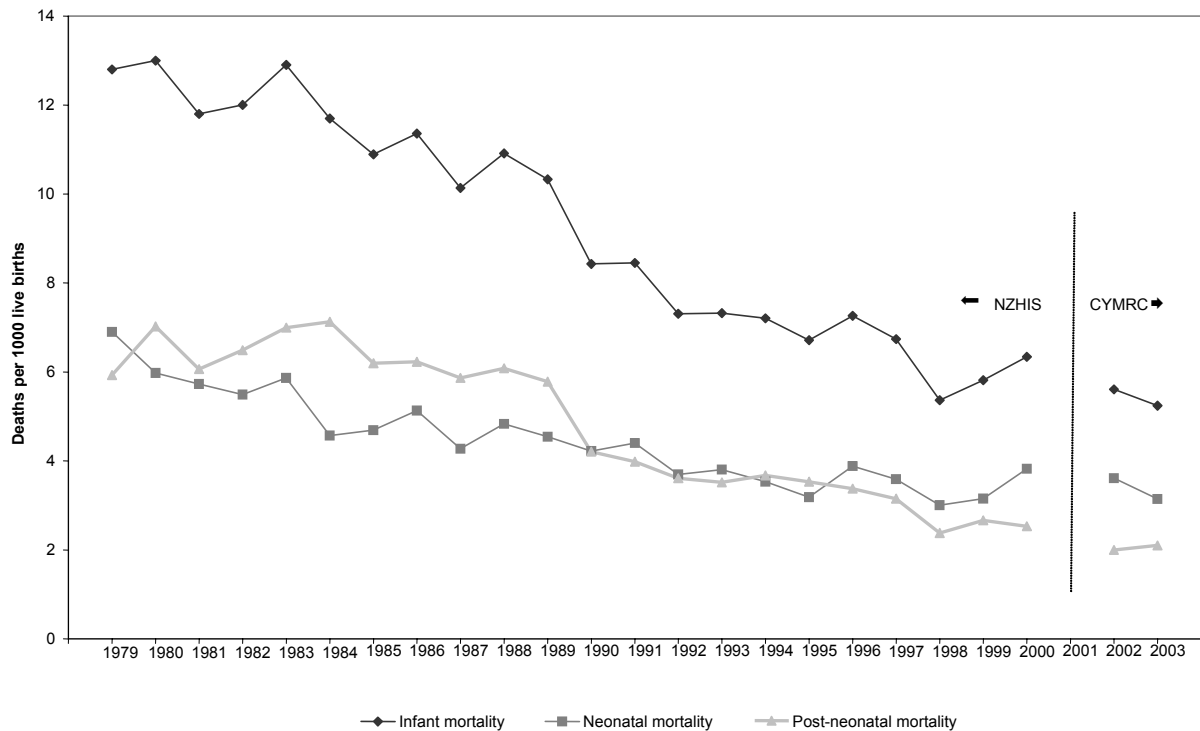


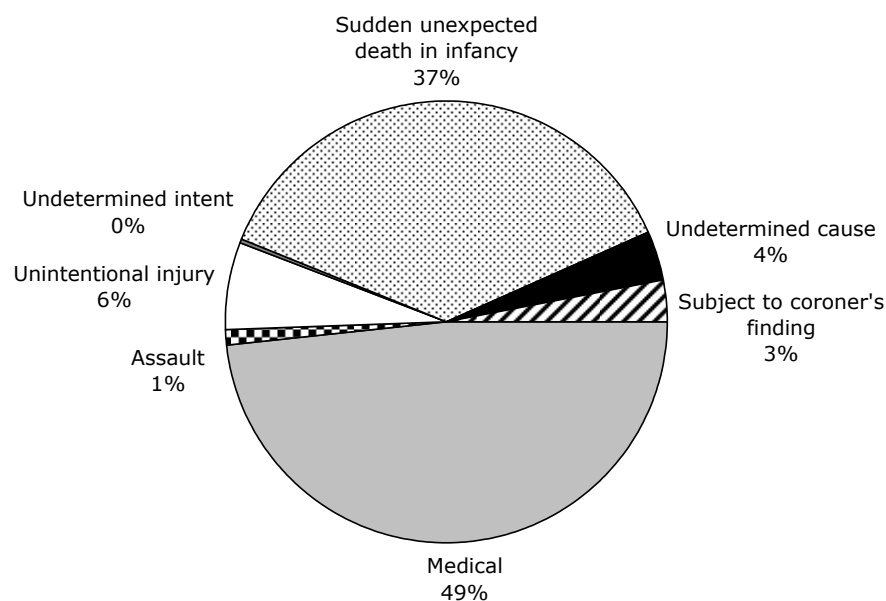
Figure A1: Infant, neonatal and post-neonatal mortality rate (per 1000 live births), 1979–2003



Post-neonatal mortality (28 days to 1 year)

The majority of post-neonatal deaths occur outside hospital. The largest group is medical (48 percent), with congenital malformations being the largest contributor to this group. Sudden unexpected death in infancy (SUDI) is the second highest cause (37 percent). (See Figures A1 and A2 and Table A1.)

Figure A2: Post-neonatal categories of death (224 deaths), 2002 and 2003



1-4 years

Figure A3: Age specific mortality rate for children 1-4 years, 1979-2003

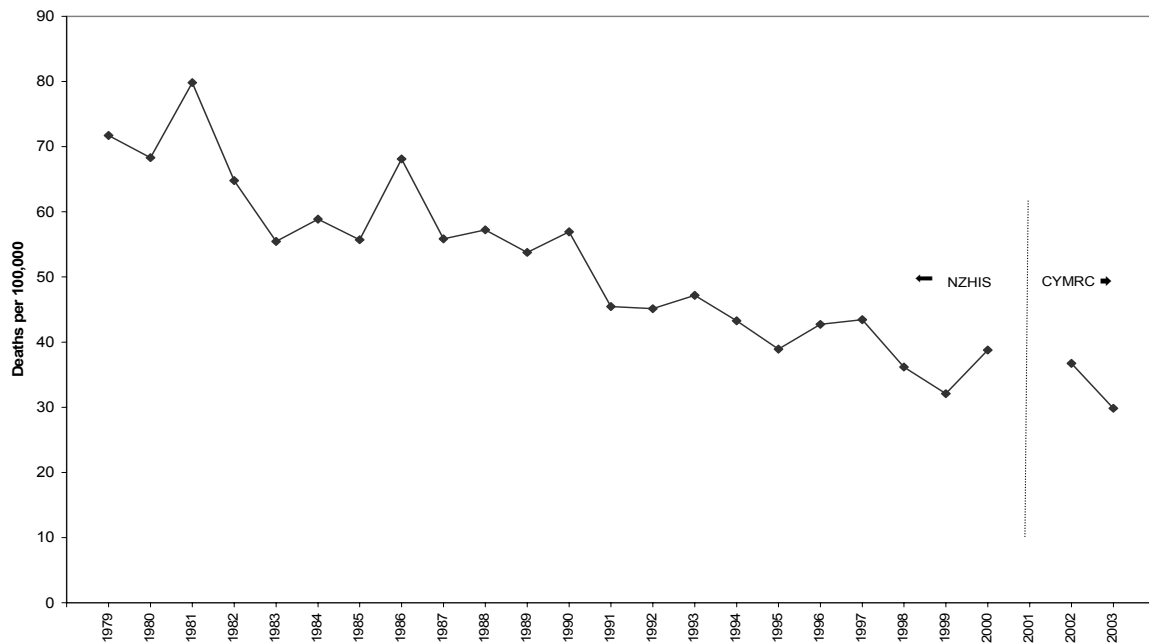


Figure A4: Categories of death for 1-4-year-olds (150 deaths), 2002 and 2003

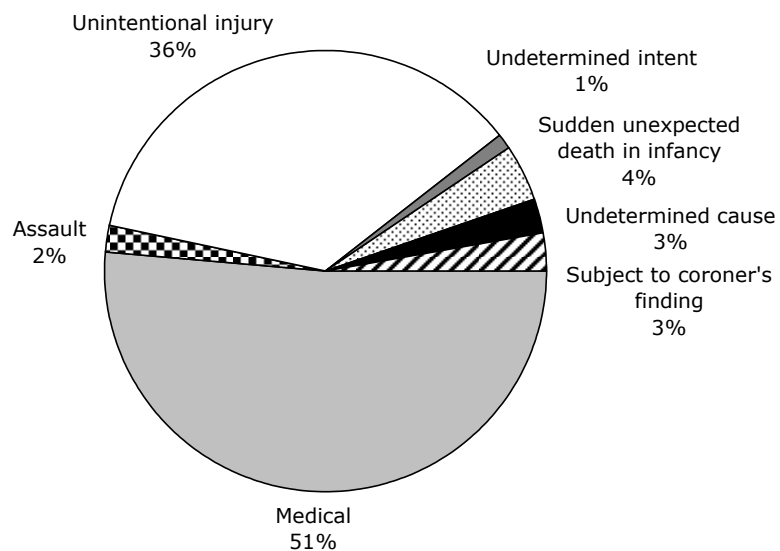


Table A2: Causes of death for 1–4-year-olds, 2002 and 2003

Category	Cause	Deaths				Age specific rate per 100,000	
		2002	2003	Total	%	2002	2003
Medical	Infectious and parasitic disease	10	6	16	11	4.43	2.67
	Neoplasms	7	7	14	9	3.10	3.12
	Diseases of the blood and blood-forming organs and disorders of immune system	1		1	1	0.44	0.00
	Endocrine, nutritional and metabolic diseases	7	4	11	7	3.10	1.78
	Diseases of nervous system	4	4	8	5	1.77	1.78
	Diseases of circulatory system		1	1	1	0.00	0.45
	Diseases of respiratory system	2	1	3	2	0.89	0.45
	Diseases of digestive system	1	1	2	1	0.44	0.45
	Diseases of genitourinary system			0	0	0.00	0.00
	Certain conditions originating in the perinatal period	5	5	10	7	2.21	2.23
	Congenital malformations, deformations and chromosomal abnormalities	3	8	11	7	1.33	3.56
		Total medical	40	37	77	51	17.72
Unintentional injury	Drowning/submersion	11	7	18	12	4.87	3.12
	Fire/burn/heat/smoke	8	1	9	6	3.54	0.45
	Vehicular	9	11	20	13	3.99	4.90
	Poisoning	1		1	1	0.44	0.00
	Struck by, against	1		1	1	0.44	0.00
	Suffocation	2	3	5	3	0.89	1.34
	Total unintentional injury	32	22	54	36	14.17	9.80
Assault	Struck by, against	2	1	3	2	0.89	0.45
	Total assault	2	1	3	2	0.89	0.45
Undetermined intent	Drowning/submersion	1	1	2	1	0.44	0.45
	Total undetermined intent	1	1	2	1	0.44	0.45
Sudden unexpected death in infancy (SUDI)	Total sudden unexpected death in infancy	2	4	6	4	0.89	1.78
Undetermined cause	Total undetermined cause	3	1	4	3	1.33	0.45
Subject to coroner's finding	Total subject to coroner's finding	3	1	4	3	1.33	0.45
Grand total		83	67	150	100	36.76	29.84

5–9 years

Figure A5: Age specific mortality rate for children 5–9 years, 1979–2003

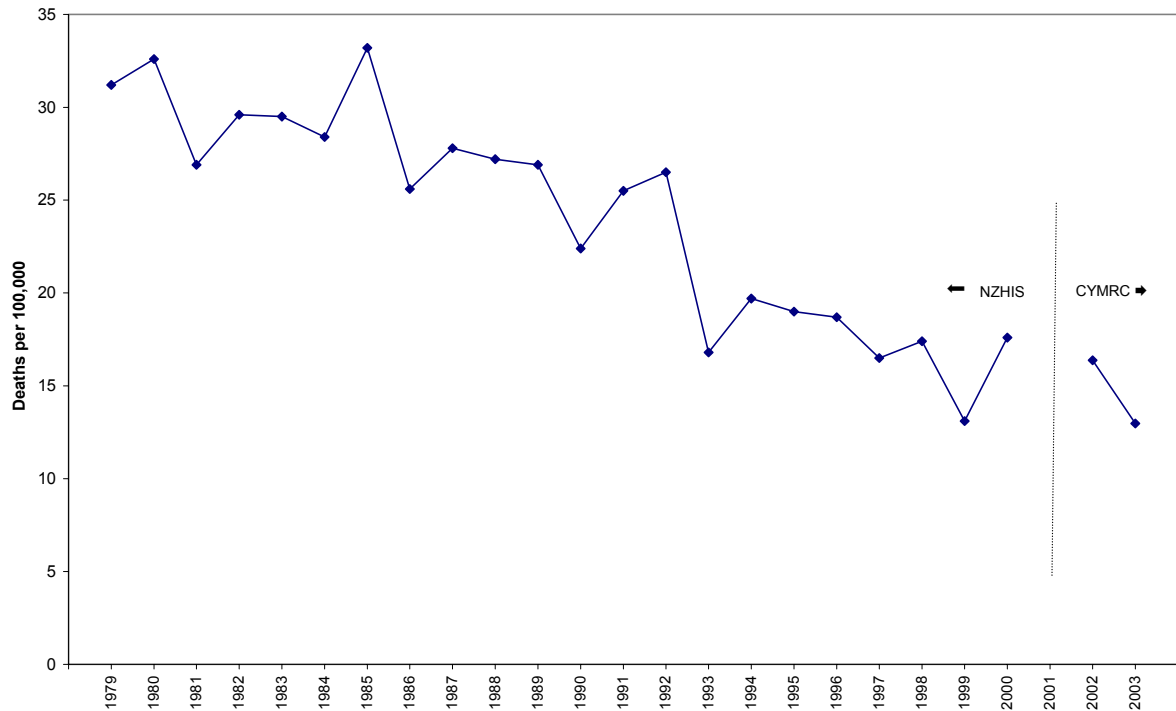


Figure A6: Categories of death of 5–9-year-olds (86 deaths), 2002 and 2003

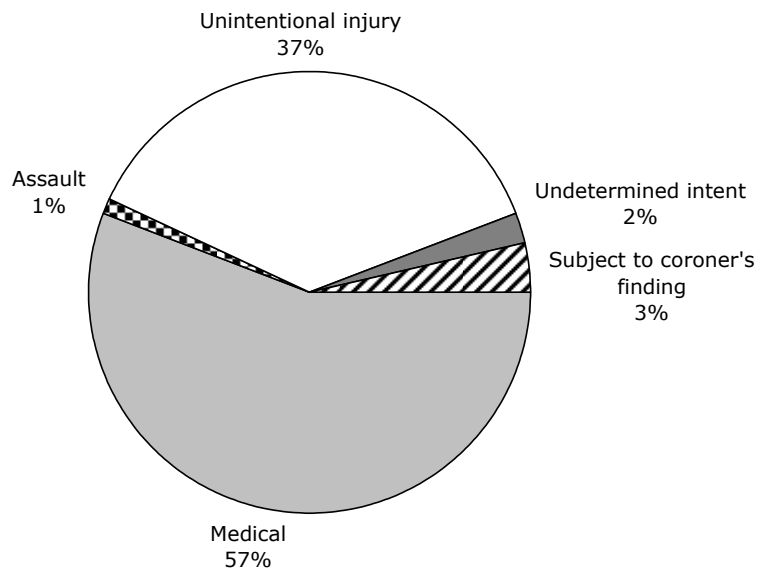


Table A3: Causes of death for 5–9-year-olds, 2002 and 2003

Category	Cause	Deaths				Age specific rate per 100,000	
		2002	2003	Total	%	2002	2003
Medical	Infectious and parasitic disease	5	3	8	9	1.71	1.02
	Neoplasms	12	6	18	21	4.09	2.05
	Endocrine, nutritional and metabolic diseases		1	1	1	0.00	0.34
	Diseases of nervous system	1	1	2	2	0.34	0.34
	Diseases of circulatory system	2	3	5	6	0.68	1.02
	Diseases of respiratory system	2	1	3	3	0.68	0.34
	Diseases of digestive system	2		2	2	0.68	0.00
	Diseases of genitourinary system		1	1	1	0.00	0.34
	Certain conditions originating in the perinatal period	2	1	3	3	0.68	0.34
	Congenital malformations, deformations and chromosomal abnormalities	4	1	5	6	1.36	0.34
	Total medical	30	18	48	56	10.23	6.15
Unintentional injury	Drowning/submersion	4	2	6	7	1.36	0.68
	Fire/burn/heat/smoke		3	3	3	0.00	1.02
	Vehicular	12	9	21	24	4.09	3.07
	Struck by, against		1	1	1	0.00	0.34
	Suffocation		1	1	1	0.00	0.34
	Total unintentional injury	16	16	32	37	5.46	5.46
Assault	Struck by, against		1	1	1	0.00	0.34
	Total assault		1	1	1	0.00	0.34
Undetermined intent	Drowning/submersion		1	1	1	0.00	0.34
	Vehicular	1		1	1	0.34	0.00
	Total undetermined intent	1	1	2	2	0.34	0.34
Coroner	Total subject to coroner's finding	1	2	3	3	0.34	0.68
Grand total		48	38	86	100	16.37	12.98

10–14 years

Figure A7: Age specific mortality rate for children 10–14 years, 1979–2003

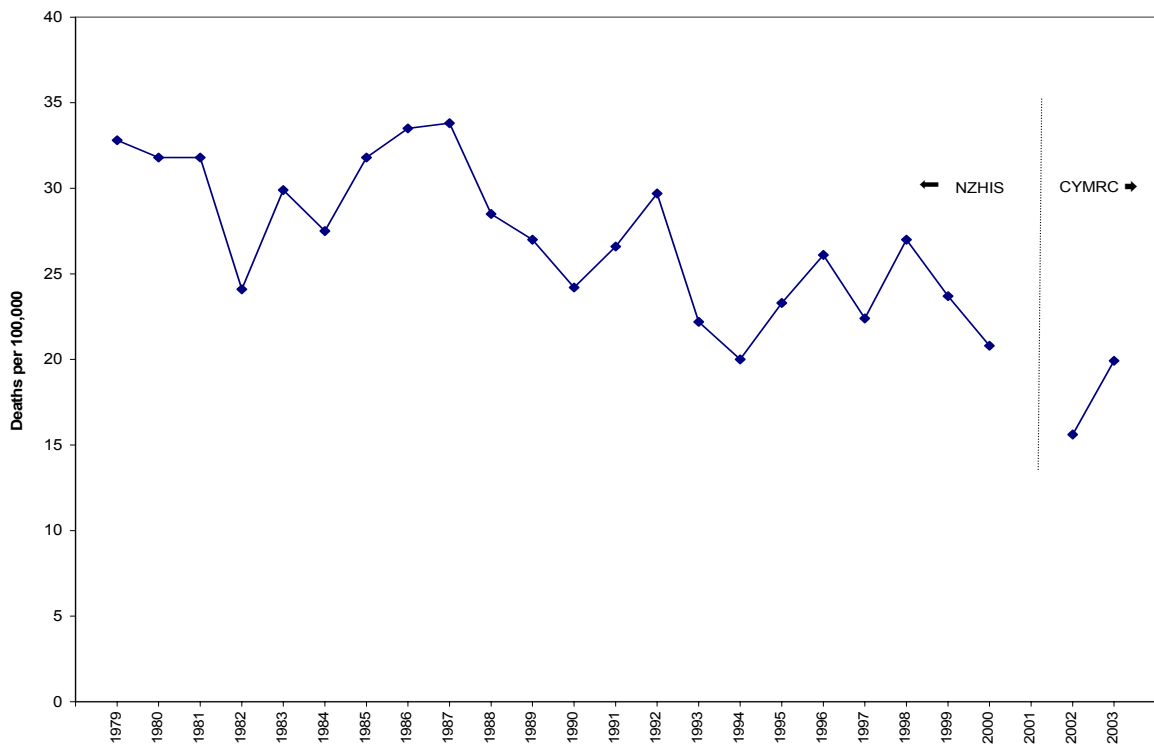


Figure A8: Categories of death of 10–14-year-olds (110 deaths), 2002 and 2003

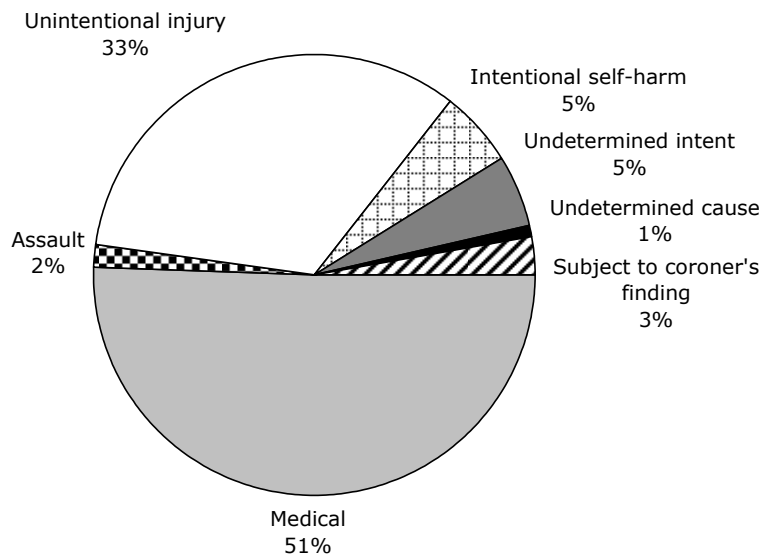


Table A4: Causes of death for 10–14-year-olds, 2002 and 2003

Category	Cause	Deaths				Age specific rate per 100,000	
		2002	2003	Total	%	2002	2003
Medical	Infectious and parasitic disease		3	3	3	0.00	0.96
	Neoplasms	9	9	18	16	2.93	2.89
	Endocrine, nutritional and metabolic diseases	2	1	3	3	0.65	0.32
	Diseases of nervous system	2	6	8	7	0.65	1.93
	Diseases of circulatory system	3	1	4	4	0.98	0.32
	Diseases of respiratory system	1	2	3	3	0.33	0.64
	Diseases of genitourinary system		1	1	1	0.00	0.32
	Certain conditions originating in the perinatal period	2	5	7	6	0.65	1.61
	Congenital malformations, deformations and chromosomal abnormalities	4	5	9	8	1.30	1.61
		Total medical	23	33	56	51	7.48
Unintentional injury	Drowning/submersion	2	3	5	5	0.65	0.96
	Fall	2	1	3	3	0.65	0.32
	Fire/burn/heat/smoke		1	1	1	0.00	0.32
	Vehicular	13	11	24	22	4.55	3.53
	Poisoning	1	1	2	2	0.33	0.32
	Suffocation		1	1	1	0.00	0.32
		Total unintentional injury	18	18	36	33	6.18
Suicide	Suffocation	2	4	6	5	0.65	1.29
		Total suicide	2	4	6	5	0.65
Assault	Struck by, against	2		2	2	0.65	0.00
		Total assault	2		2	2	0.65
Undetermined intent	Drowning/submersion		1	1	1	0.00	0.32
	Vehicular	3	1	4	3	0.65	0.32
	Struck by, against		1	1	1	0.00	0.32
		Total undetermined intent	3	3	6	5	0.65
Undetermined cause	Total undetermined cause		1	1	1	0.00	0.32
Coroner	Total subject to coroner's finding		3	3	3	0.00	0.96
Grand total		48	62	110	100	15.61	19.92

Youth mortality (15–24 years)

The following figures for youth mortality are shown in two age bands: 15–19 years (Figures A9 and A10 and Table A5) and 20–24 years (Figures A11 and A12 and Table A6). The mortality rate is calculated as the number of deaths per 100,000 estimated mean resident population of the respective age group.

In 2002, 20–24-year-olds had the highest mortality rate, but in 2003, 15–19-year-olds had the highest mortality rate. The major causes of death in these age groups are motor vehicle accidents and suicide. Medical causes drop to being just under 25 percent of all deaths.

15–19 years

Figure A9: Age specific mortality rate for youth 15–19 years, 1979–2003

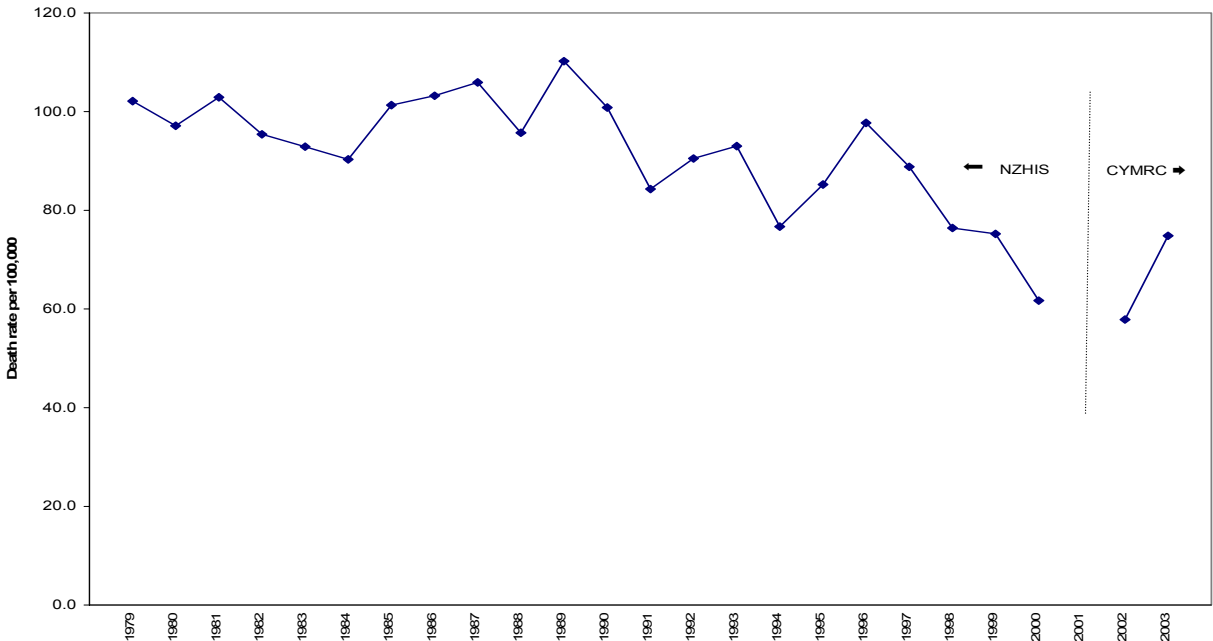


Figure A10: Categories of death of 15–19-year-olds (387 deaths), 2002 and 2003

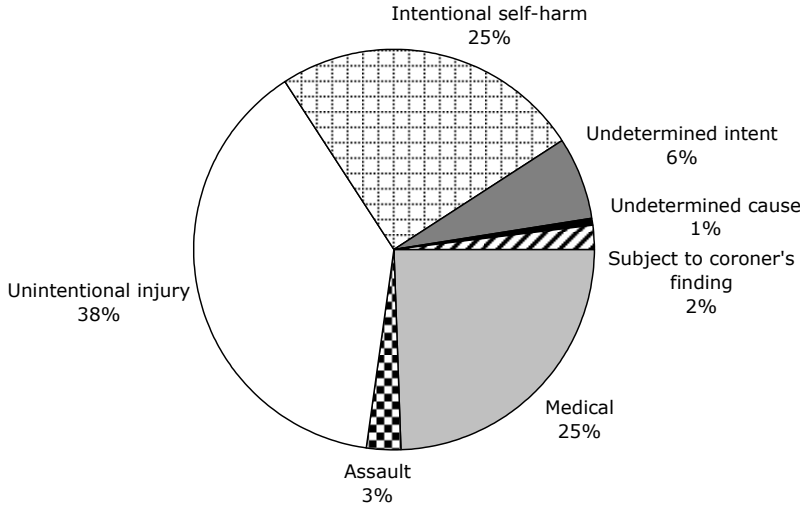


Table A5: Causes of death for 15–19-year-olds, 2002 and 2003

Category	Cause	Deaths				Age specific rate per 100,000	
		2002	2003	Total	%	2002	2003
Medical	Infectious and parasitic disease	8	7	15	4	2.79	2.37
	Neoplasms	7	17	24	6	2.44	5.76
	Diseases of nervous system	8	5	13	3	2.79	1.69
	Diseases of circulatory system	9	13	22	5	3.14	4.06
	Diseases of respiratory system	5	5	10	3	1.74	1.69
	Diseases of digestive system		2	2	1	0.00	0.68
	Diseases of musculoskeletal system and connective tissue		2	2	1	0.00	0.68
	Diseases of genitourinary system		3	3	1	0.00	1.02
	Certain conditions originating in the perinatal period	3	1	4	1	1.05	0.34
		Total medical	40	55	95	25	13.94
Unintentional injury	Adverse effect of drug or medicament	1		1	0	0.35	0.00
	Drowning/submersion	4	4	8	2	1.39	1.35
	Fall	2		2	1	0.70	0.00
	Fire/burn/heat/smoke	4		4	1	1.39	0.00
	Machinery	1		1	0	0.35	0.00
	Vehicular	51	63	114	30	18.12	21.33
	Poisoning	3	9	12	3	1.05	3.05
	Struck by, against		2	2	1	0.00	0.68
	Suffocation	3	3	6	2	1.05	1.02
	Total unintentional injury	69	81	150	39	24.39	27.43
Suicide	Drowning/submersion		1	1	0	0.00	0.34
	Fall	1	3	4	1	0.35	1.02
	Firearm	4	2	6	2	1.39	0.68
	Vehicular	1	1	2	1	0.35	0.34
	Poisoning	4	5	9	2	1.39	1.69
	Suffocation	31	44	75	19	10.80	14.90
		Total suicide	41	56	97	25	14.29
Assault	Cut/pierce	1	1	2	1	0.35	0.34
	Vehicular		1	1	0	0.00	0.34
	Struck by, against	4	3	7	2	1.39	1.02
		Total assault	5	5	10	3	1.74
Undetermined intent	Poisoning	1		1	0	0.35	0.00
	Cut/pierce		1	1	0	0.00	0.34
	Fall	1	1	2	1	0.35	0.34
	Vehicular	5	16	21	6	2.09	5.42
		Total undetermined intent	7	18	25	6	2.79
Undetermined cause	Total undetermined cause	2		2	1	0.70	0.00
Coroner	Total subject to coroner's finding	2	6	8	2	0.70	2.03
Grand total		166	221	387	100	58.54	74.50

20–24 years

Figure A11: Age specific mortality rate for youth 20–24 years, 1979–2003

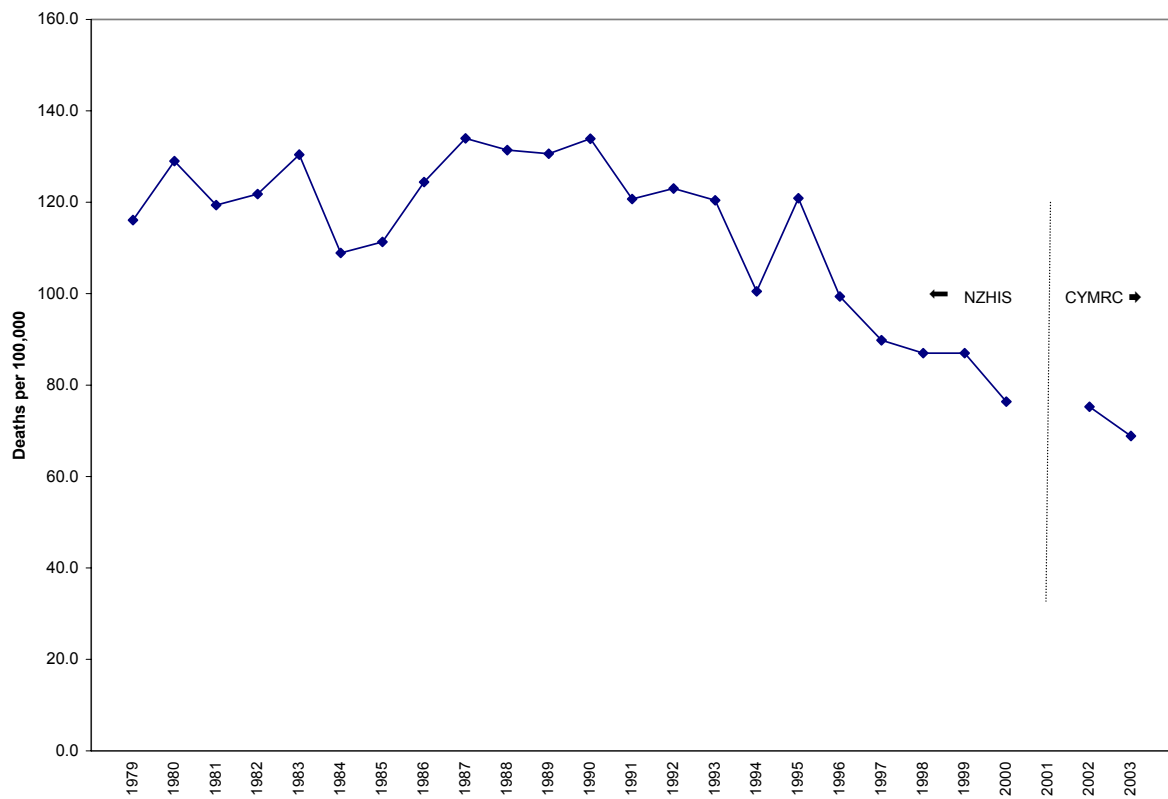


Figure A12: Categories of death for 20–24-year-olds (392 deaths), 2002 and 2003

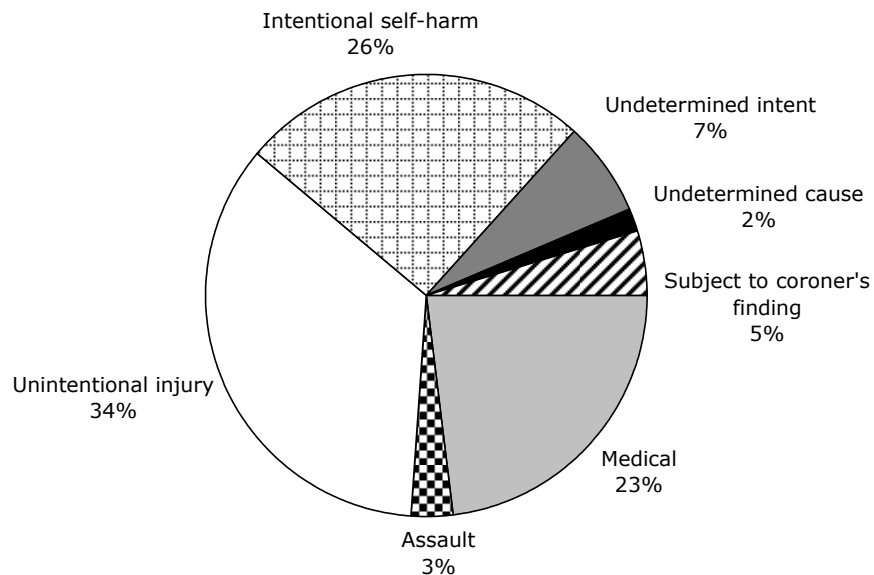


Table A6: Causes of death for 20–24 year olds in 2002 and 2003

Category	Cause	Deaths				Age specific rate per 100,000	
		2002	2003	Total	%	2002	2003
Medical	Infectious and parasitic disease	2	5	7	2	0.75	1.79
	Neoplasms	16	16	32	8	6.02	5.74
	Diseases of the blood, blood-forming organs and disorders of immune system	1		1	0	0.38	0.00
	Endocrine, nutritional and metabolic diseases	1		1	0	0.38	0.00
	Diseases of nervous system	6	8	14	4	2.26	2.87
	Diseases of circulatory system	7	10	17	4	2.63	3.59
	Diseases of respiratory system	9	2	11	3	3.39	0.72
	Certain conditions originating in the perinatal period	2	3	5	1	0.75	1.08
	Congenital malformations, deformations and chromosomal abnormalities	2		2	1	0.75	0.00
	Total medical		46	44	90	23	17.31
Unintentional injury	Drowning/submersion	8	7	15	4	3.01	2.51
	Fall	2	1	3	1	0.75	0.36
	Fire/burn/heat/smoke	2	1	3	1	0.75	0.36
	Firearm		1	1	0	0.00	0.36
	Vehicular	49	49	98	25	18.44	17.58
	Natural/environmental/animal	2		2	1	0.75	0.00
	Poisoning	4	7	11	3	1.51	2.51
	Struck by, against	3	1	4	1	1.13	0.36
	Suffocation		1	1	0	0.00	0.36
Total unintentional injury		70	68	138	34	26.35	24.39
Suicide	Cut/pierce	1	1	2	1	0.38	0.36
	Drowning/submersion	2		2	1	0.75	0.00
	Fall	2	3	5	1	0.75	1.08
	Fire/burn/heat/smoke	1		1	0	0.38	0.00
	Firearm	2	1	3	1	0.75	0.36
	Vehicular	2	2	4	1	0.75	0.72
	Poisoning	14	12	26	7	5.27	4.30
	Suffocation	29	27	56	14	10.91	9.68
	Electrocution		1	1	0	0.00	0.36
Total suicide		53	47	100	26	19.94	16.86
Assault	Cut/pierce	3	6	9	2	1.13	2.15
	Firearm	1		1	0	0.38	0.00
	Struck by, against		1	1	0	0.00	0.36
	Suffocation		1	1	0	0.00	0.36
Total assault		4	8	12	3	1.51	2.87
Undetermined intent	Drowning/submersion		2	2	1	0.00	0.72
	Fall	2		2	0	0.38	0.00
	Vehicular	6	14	20	5	2.26	5.02
	Natural/environmental/animal	1		1	0	0.38	0.00
	Poisoning	1	1	2	1	0.38	0.36
Total undetermined intent		10	17	27	7	3.39	6.10
Undetermined cause	Total undetermined cause	6		6	2	2.26	0.00
Coroner	Total subject to coroner's finding	11	8	19	5	4.14	2.87
Grand total		200	192	392	100	74.52	68.87

Most deaths occur by hanging in males (71 percent) and females (61 percent), with an increased proportion of deaths by poisoning (mainly carbon monoxide poisoning) in the 20–24 age group and females.

As in previous years, Maori rates are higher than for non-Maori, with 35 percent of female suicide deaths being classified as Maori and 32 percent of male deaths classified as Maori.

Table A13: Deaths from self-harm by age and gender , 2002 and 2003

Gender	Age group	Deaths			Age specific rate per 100,000	
		2002	2003	Total	2002	2003
Female	10–14 years		1	1		0.66
	15–19 years	16	19	35	11.42	13.19
	20–24 years	13	17	30	9.86	12.39
	Total female	29	37	66	6.87	8.55
Male	10–14 years	2	3	5	1.30	1.88
	15–19 years	25	37	62	17.02	24.47
	20–24 years	40	30	70	29.88	21.18
	Total male	67	70	137	15.29	15.46
Both	10–14 years	2	4	6	0.65	1.29
	15–19 years	41	56	97	14.29	18.96
	20–24 years	53	47	100	19.94	16.86
	Grand total	96	107	203	11.16	12.09

Table A14: Means of death from self-harm, 2002 and 2003

Means of self-harm deaths	Female			Male			Total
	2002	2003	Total	2002	2003	Total	
Suffocation	19	21	40	43	54	97	137
Poisoning	6	10	16	12	7	19	35
Fall	1	3	4	2	3	5	9
Firearm	1	1	2	5	2	7	9
Vehicular		1	1	3	2	5	6
Drowning/submersion	1	1	2	1		1	3
Cut/pierce				1	1	2	2
Fire/burn/heat/smoke	1		1				1
Electrocution					1	1	1
Grand total	29	37	66	67	70	137	203