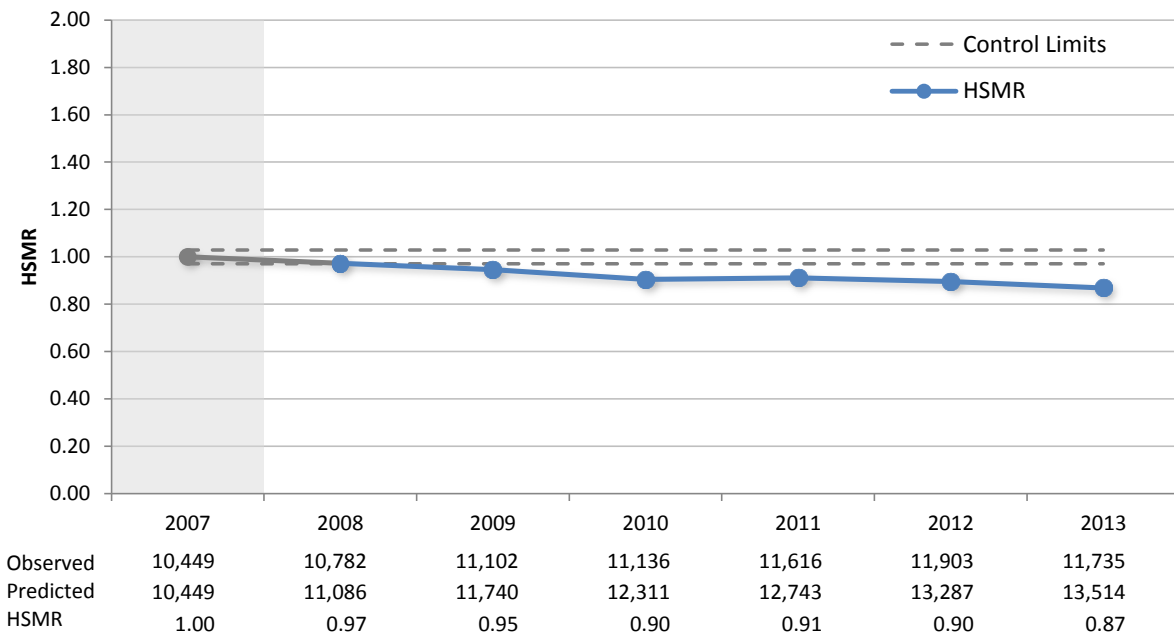


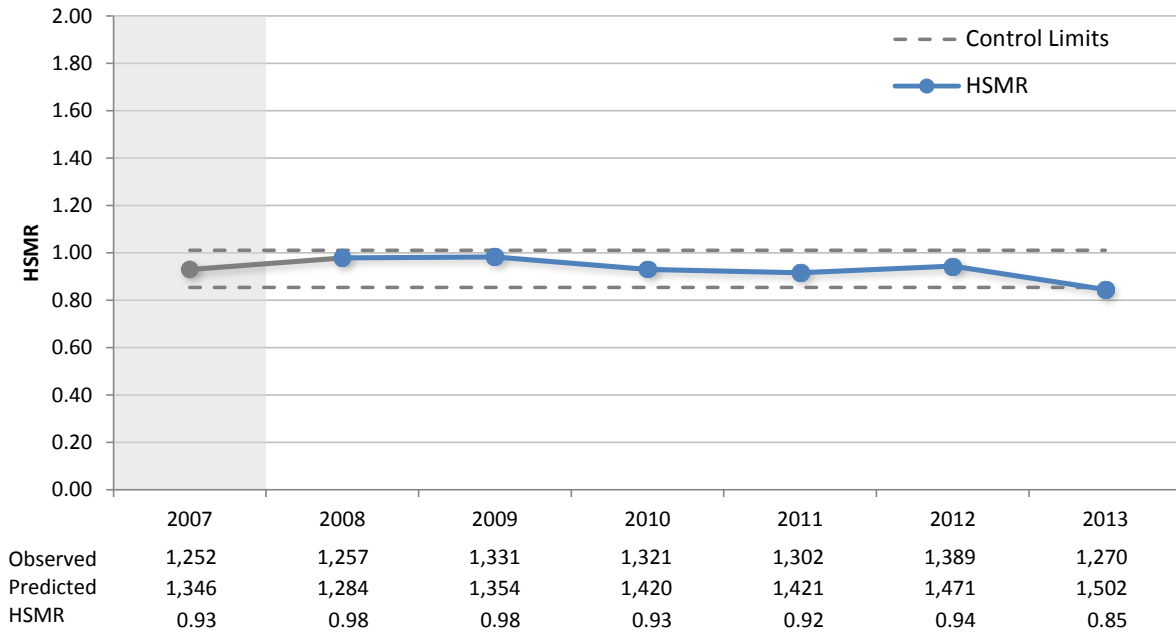
Hospital Standardised Mortality Ratios from 2007 to 2013 Calendar Year

HSMRs are used as a tool to flag when further investigation of mortality is warranted. They should not be used in isolation and cannot be used to rank hospital performance. There are many factors that influence HSMRs, some of which may be beyond the control of the facility.

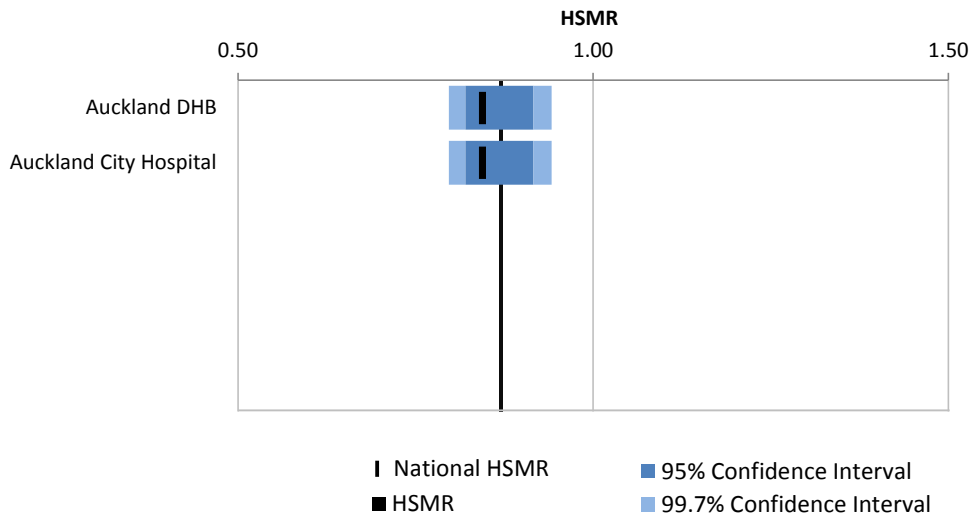
Hospital Standardised Mortality Ratio by Year: National



Hospital Standardised Mortality Ratio by Year: Auckland DHB

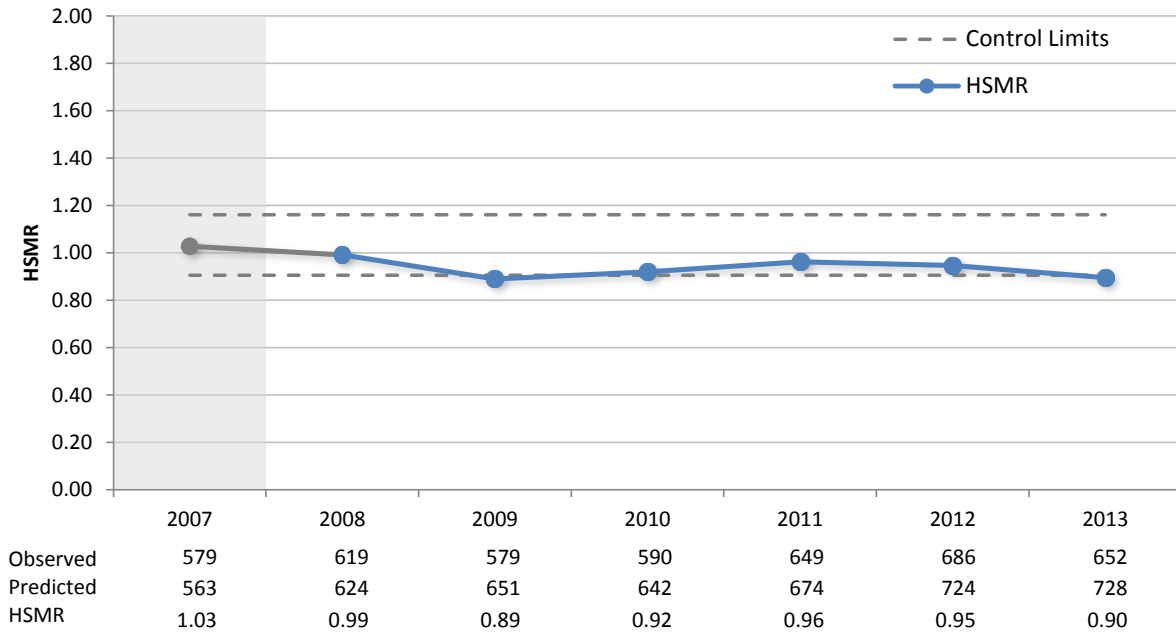


Hospital Standardised Mortality Ratio by Facility: Auckland DHB, 2013

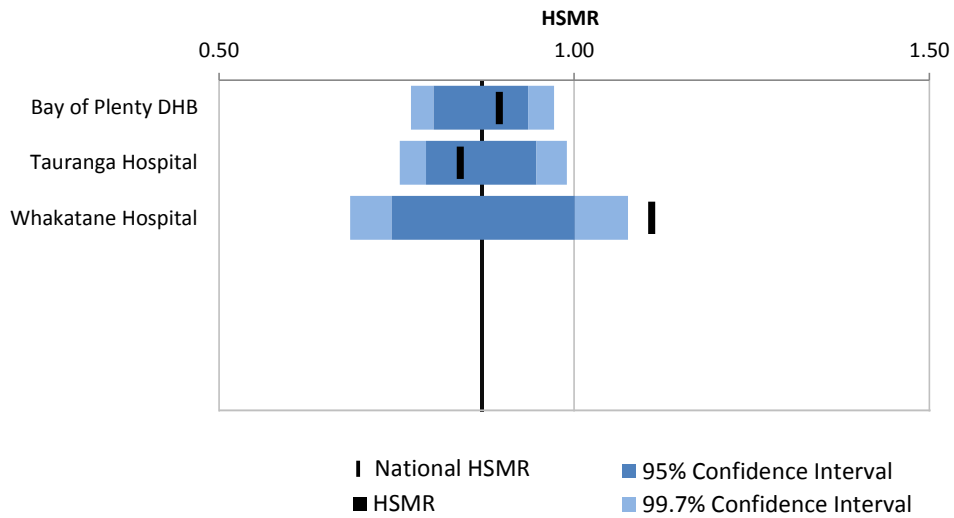


	Observed	Predicted	HSMR
National	11,735	13,514	0.87
Auckland DHB	1,270	1,502	0.85
Auckland City Hospital	1,270	1,502	0.85

Hospital Standardised Mortality Ratio by Year: Bay of Plenty DHB

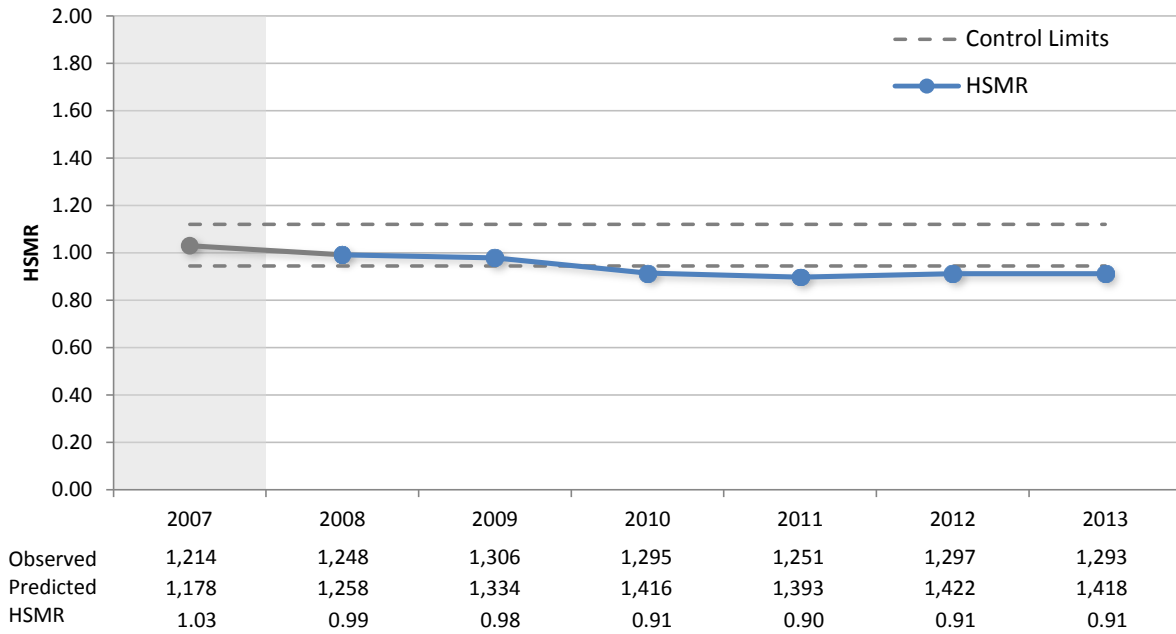


Hospital Standardised Mortality Ratio by Facility: Bay of Plenty DHB, 2013

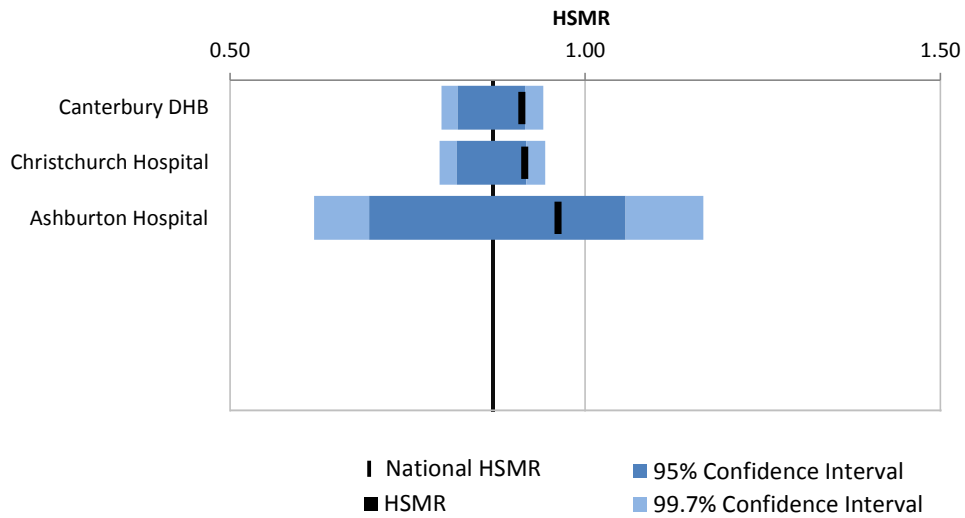


	Observed	Predicted	HSMR
National	11,735	13,514	0.87
Bay of Plenty DHB	652	728	0.90
Tauranga Hospital	479	570	0.84
Whakatane Hospital	173	156	1.11

Hospital Standardised Mortality Ratio by Year: Canterbury DHB

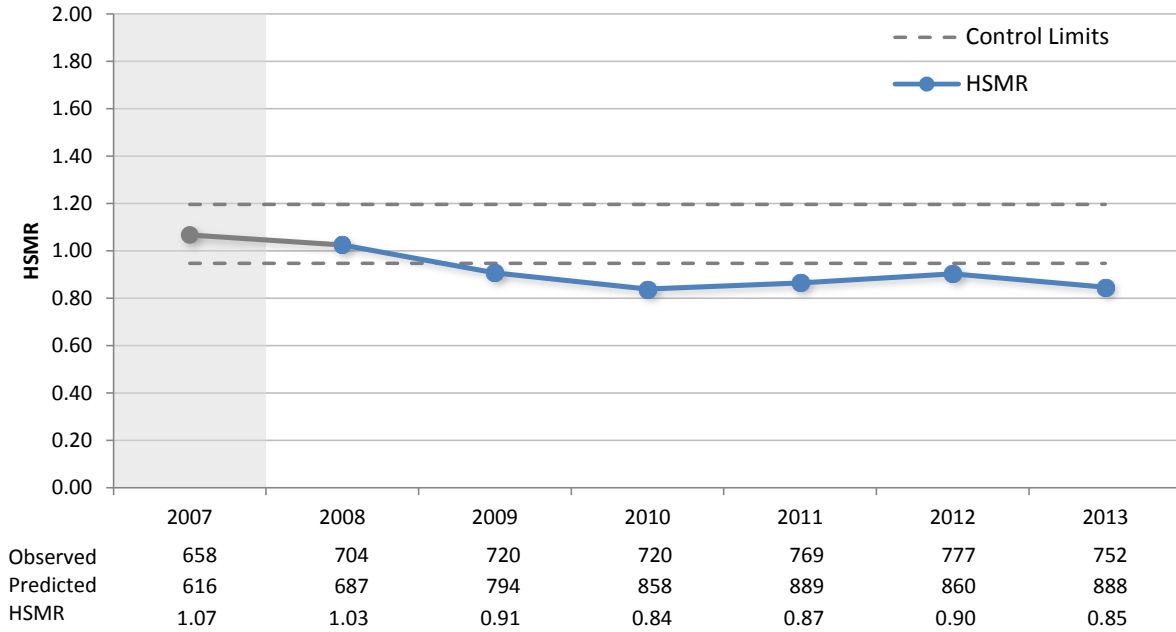


Hospital Standardised Mortality Ratio by Facility: Canterbury DHB, 2013

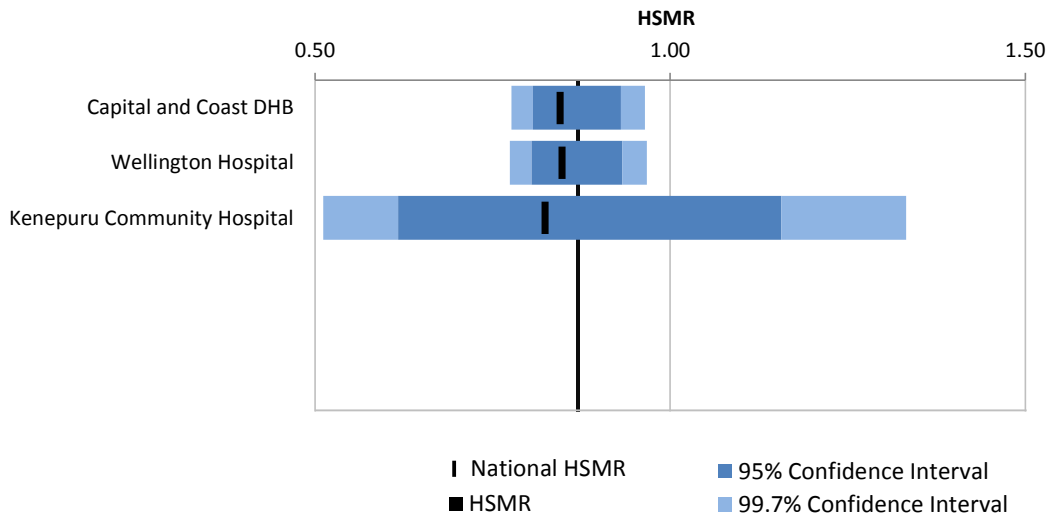


	Observed	Predicted	HSMR
National	11,735	13,514	0.87
Canterbury DHB	1,293	1,418	0.91
Christchurch Hospital	1,203	1,313	0.92
Ashburton Hospital	88	91	0.96

Hospital Standardised Mortality Ratio by Year: Capital and Coast DHB

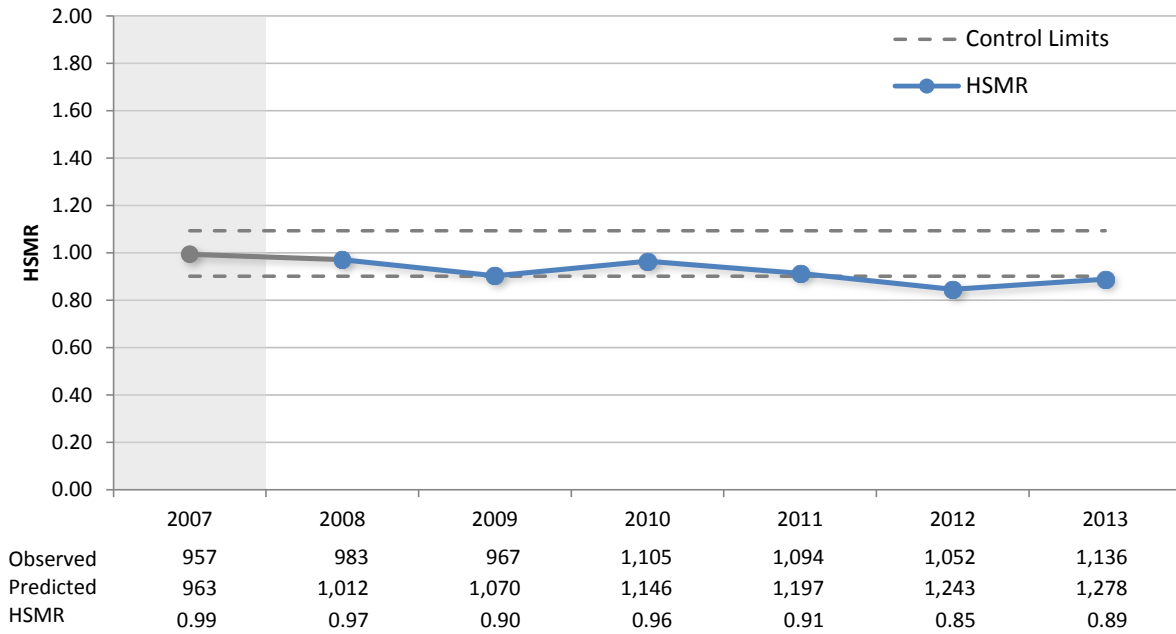


Hospital Standardised Mortality Ratio by Facility: Capital and Coast DHB, 2013

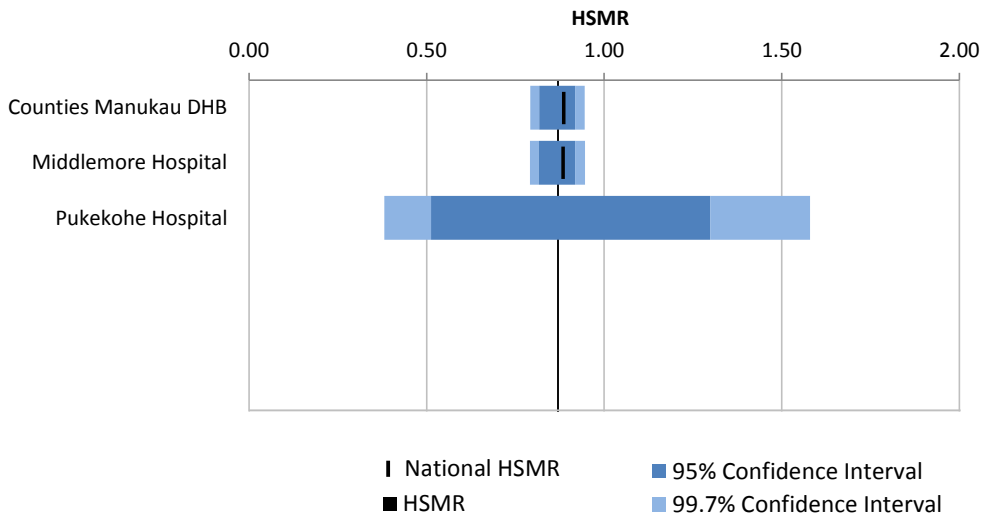


	Observed	Predicted	HSMR
National	11,735	13,514	0.87
Capital and Coast DHB	752	888	0.85
Wellington Hospital	713	840	0.85
Kenepuru Community Hospital	39	47	0.83

Hospital Standardised Mortality Ratio by Year: Counties Manukau DHB

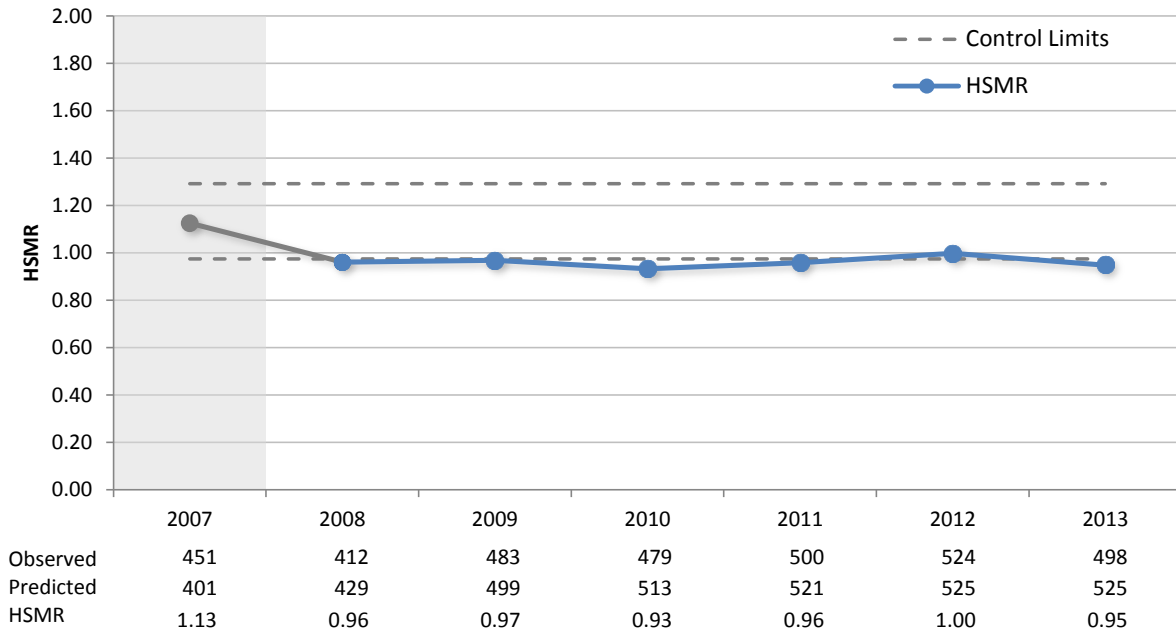


Hospital Standardised Mortality Ratio by Facility: Counties Manukau DHB, 2013

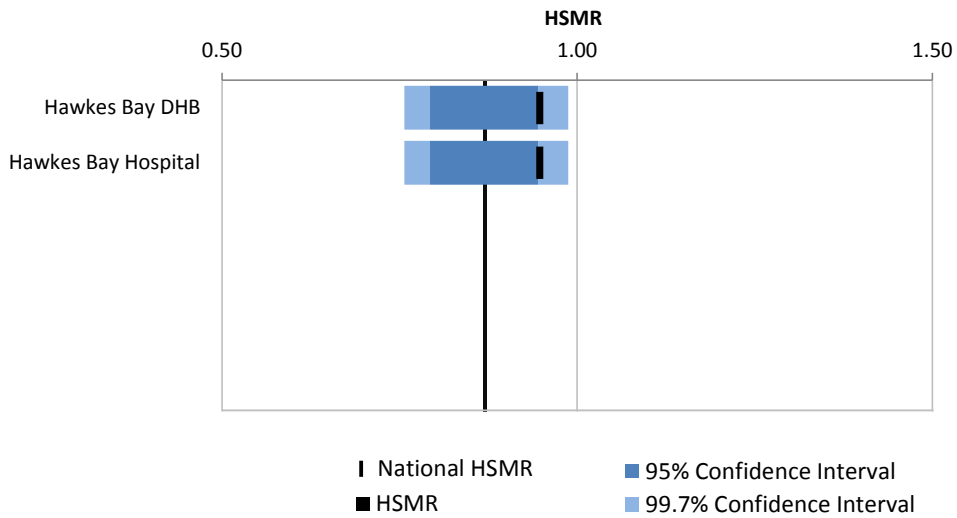


	Observed	Predicted	HSMR
National	11,735	13,514	0.87
Counties Manukau DHB	1,136	1,278	0.89
Middlemore Hospital	1,114	1,256	0.89
Pukekohe Hospital	18	3	6.84

Hospital Standardised Mortality Ratio by Year: Hawkes Bay DHB

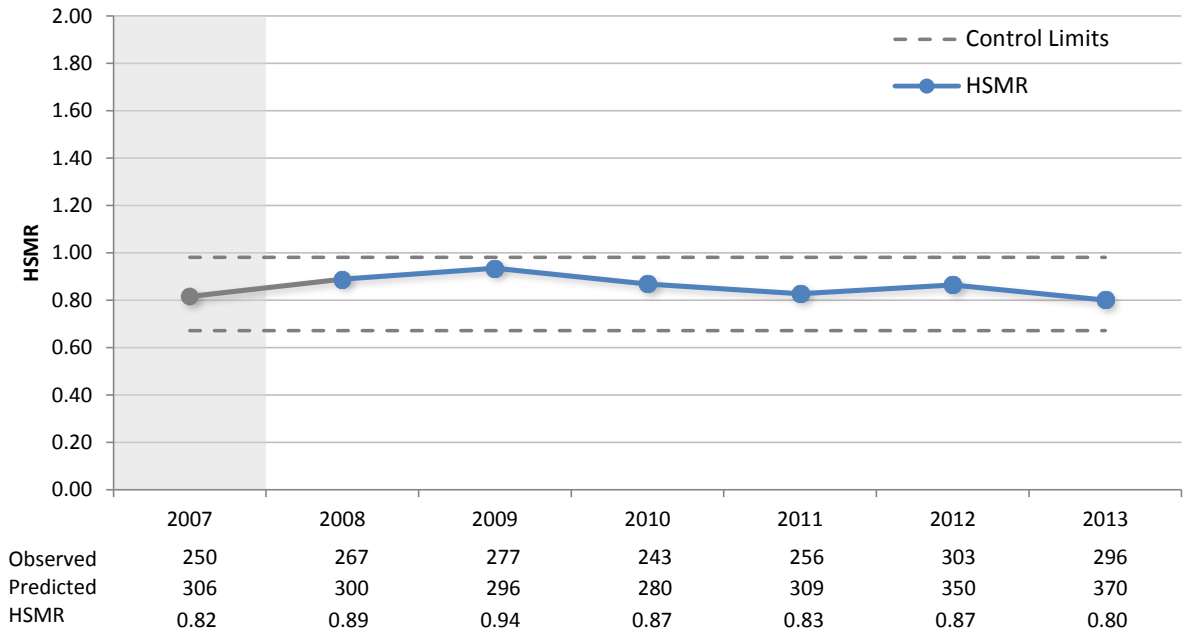


Hospital Standardised Mortality Ratio by Facility: Hawkes Bay DHB, 2013

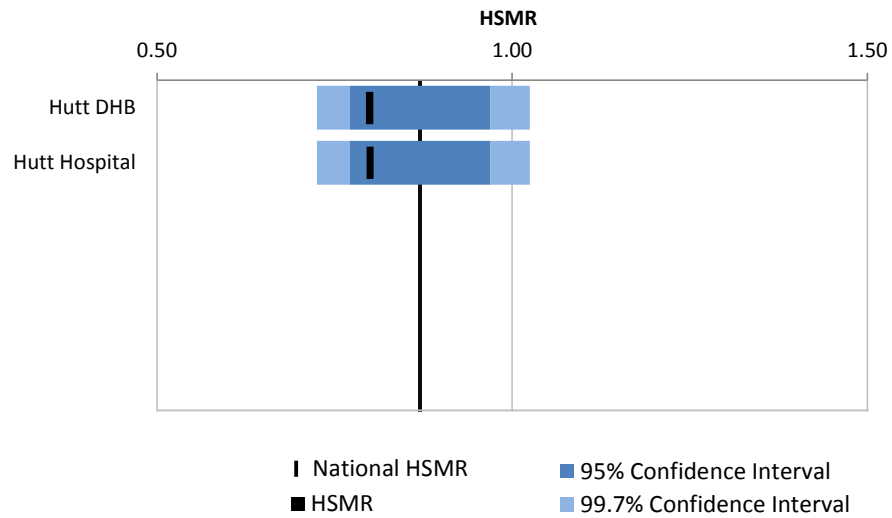


	Observed	Predicted	HSMR
National	11,735	13,514	0.87
Hawkes Bay DHB	498	525	0.95
Hawkes Bay Hospital	498	525	0.95

Hospital Standardised Mortality Ratio by Year: Hutt DHB

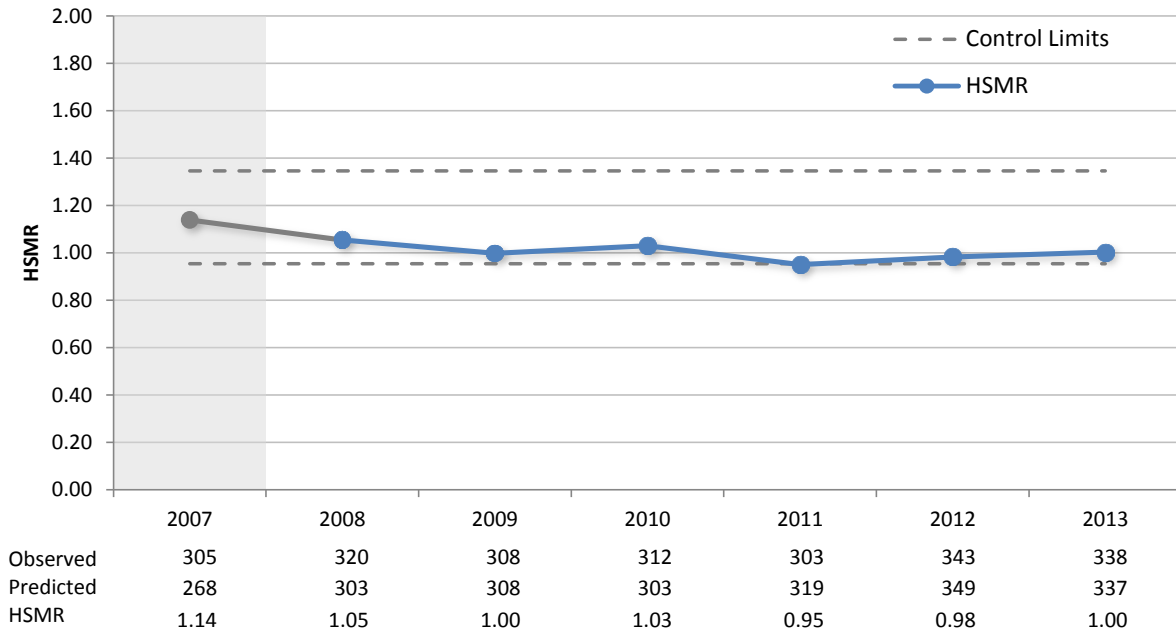


Hospital Standardised Mortality Ratio by Facility: Hutt DHB, 2013

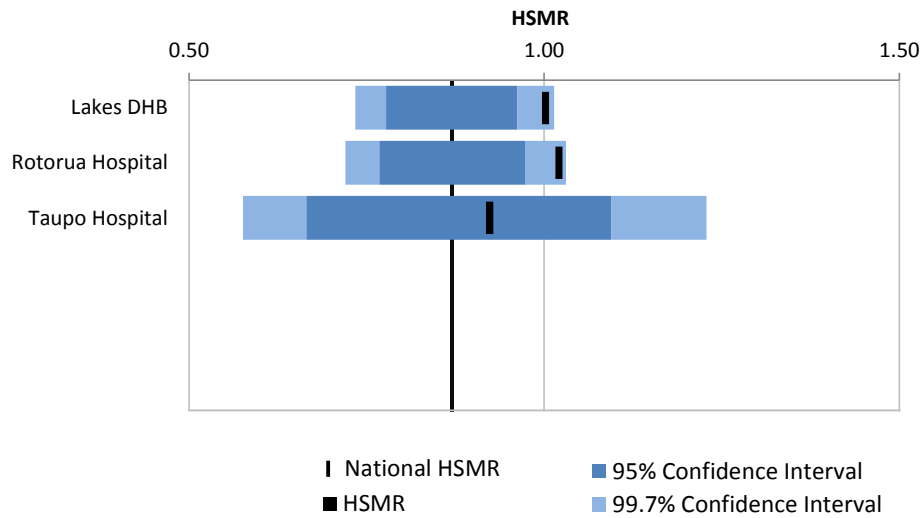


	Observed	Predicted	HSMR
National	11,735	13,514	0.87
Hutt DHB	296	370	0.80
Hutt Hospital	296	369	0.80

Hospital Standardised Mortality Ratio by Year: Lakes DHB

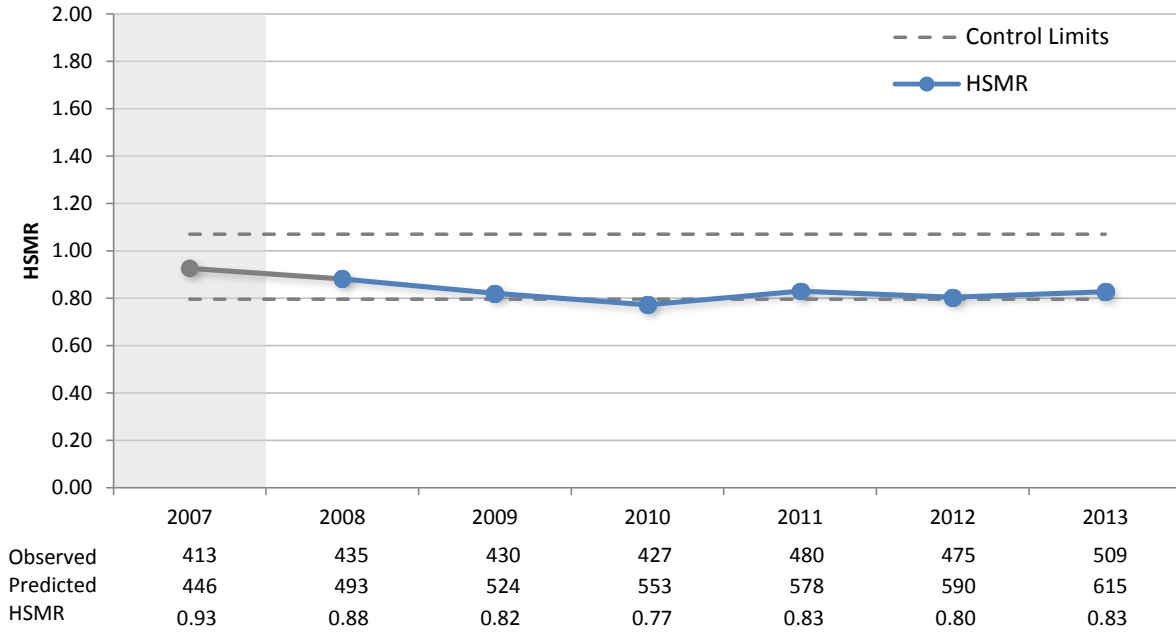


Hospital Standardised Mortality Ratio by Facility: Lakes DHB, 2013

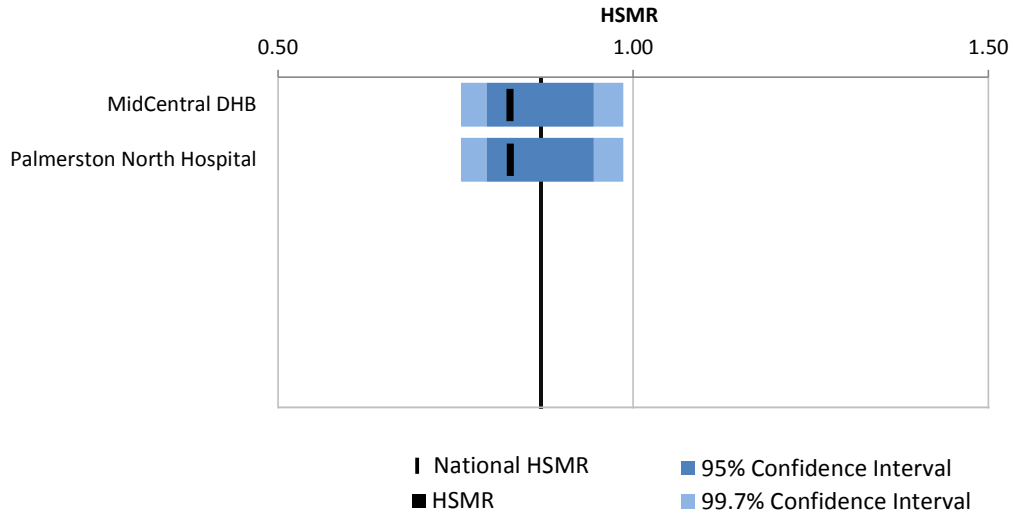


	Observed	Predicted	HSMR
National	11,735	13,514	0.87
Lakes DHB	338	337	1.00
Rotorua Hospital	275	269	1.02
Taupo Hospital	62	67	0.92

Hospital Standardised Mortality Ratio by Year: MidCentral DHB

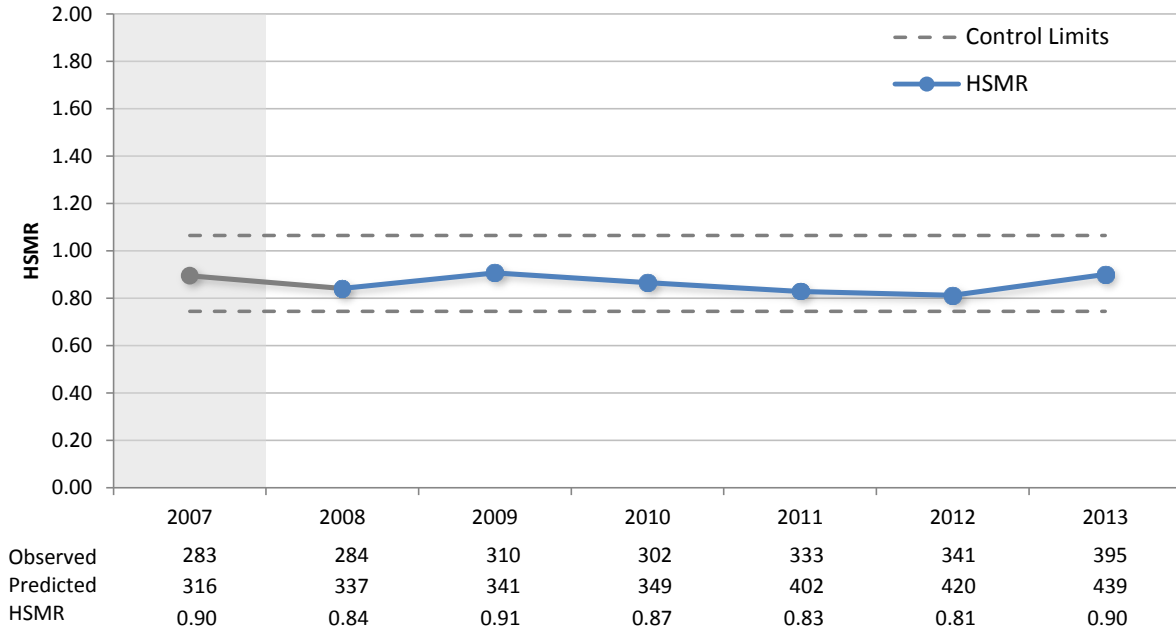


Hospital Standardised Mortality Ratio by Facility: MidCentral DHB, 2013

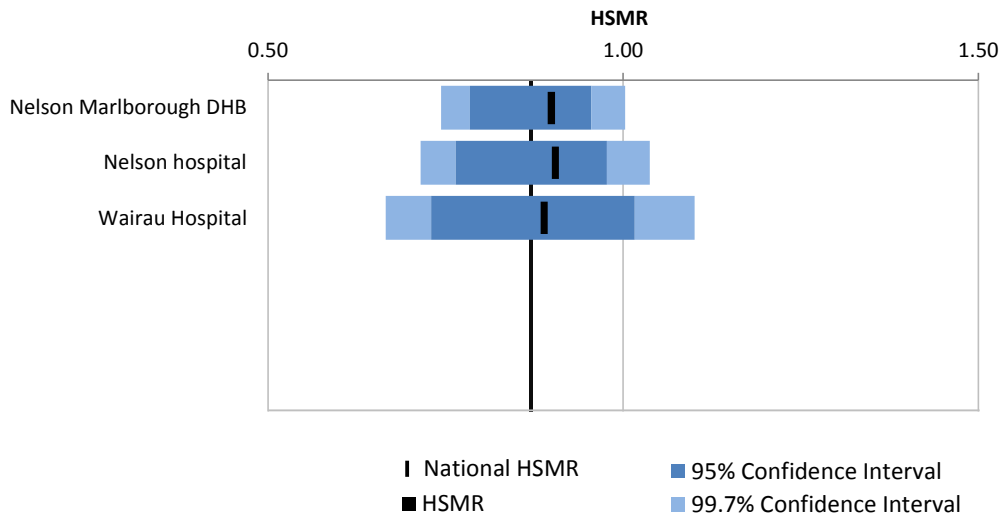


	Observed	Predicted	HSMR
National	11,735	13,514	0.87
MidCentral DHB	509	615	0.83
Palmerston North Hospital	509	614	0.83

Hospital Standardised Mortality Ratio by Year: Nelson Marlborough DHB

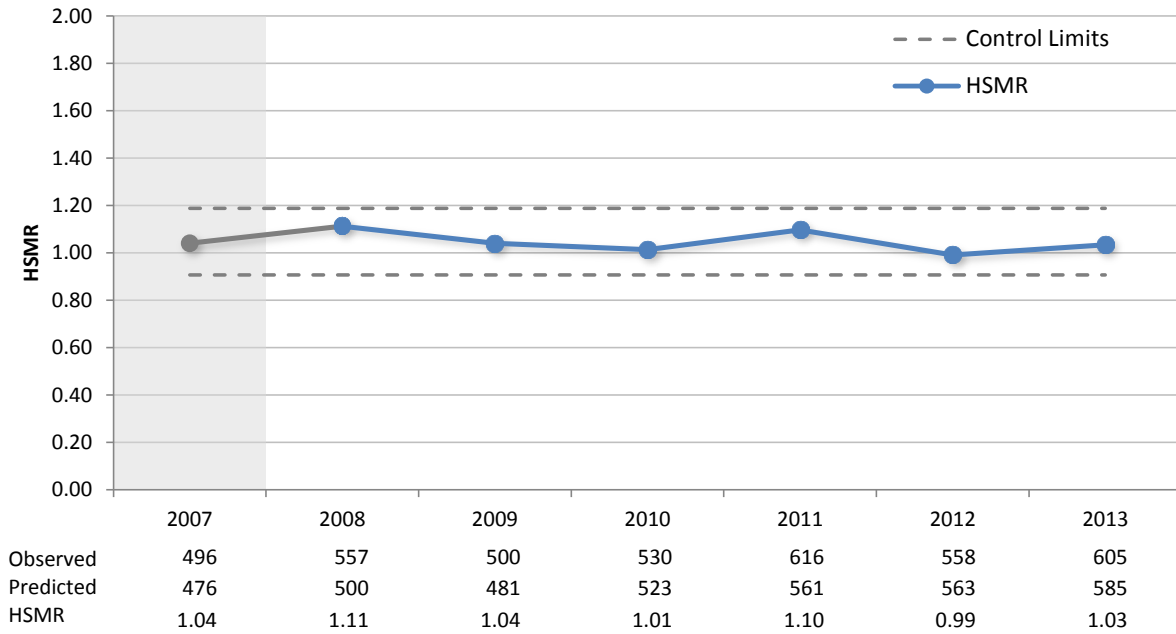


Hospital Standardised Mortality Ratio by Facility: Nelson Marlborough DHB, 2013

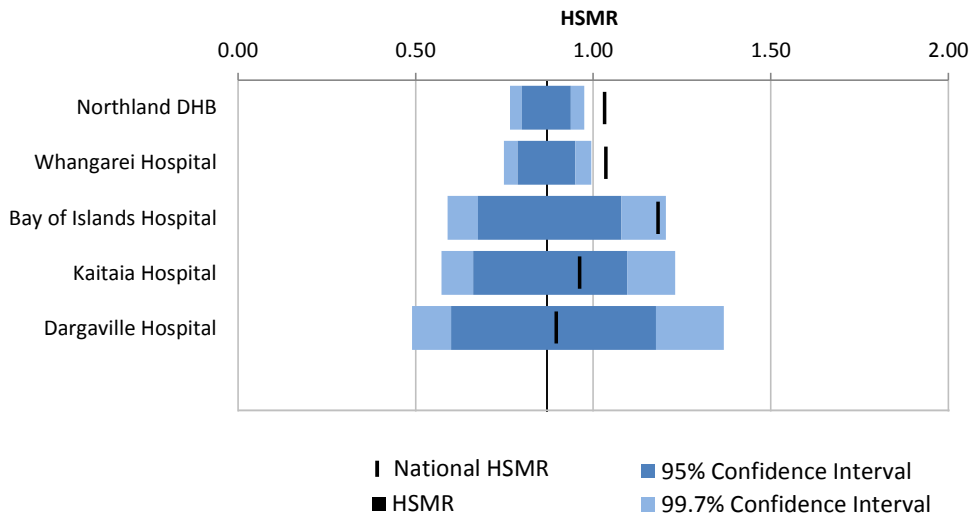


	Observed	Predicted	HSMR
National	11,735	13,514	0.87
Nelson Marlborough DHB	395	439	0.90
Nelson hospital	255	281	0.91
Wairau Hospital	140	157	0.89

Hospital Standardised Mortality Ratio by Year: Northland DHB

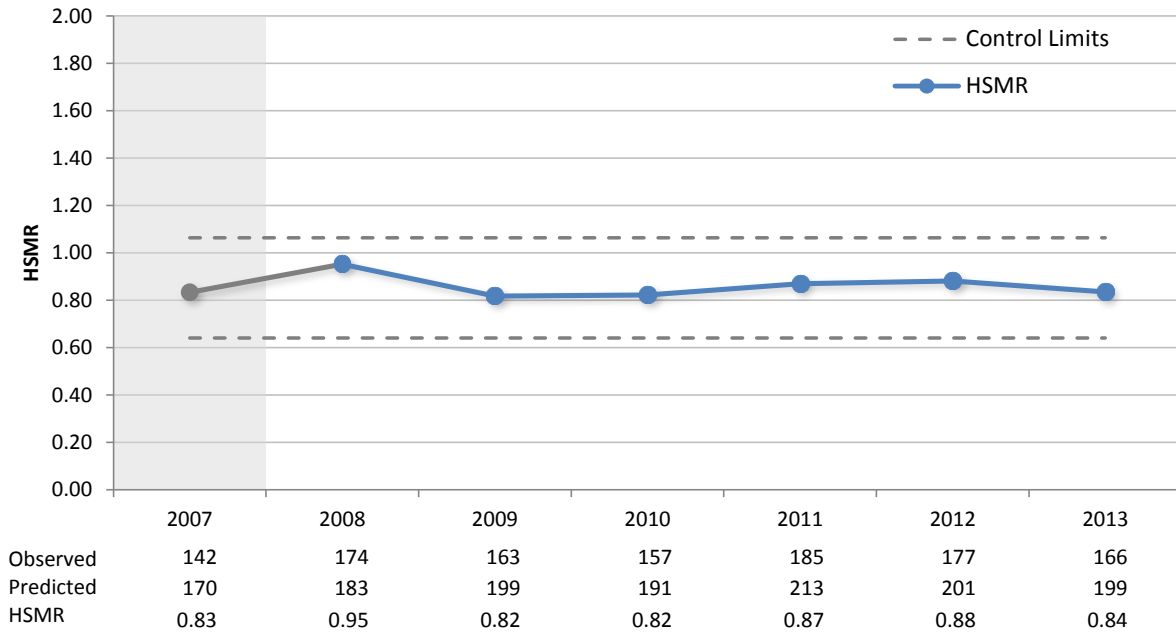


Hospital Standardised Mortality Ratio by Facility: Northland DHB, 2013

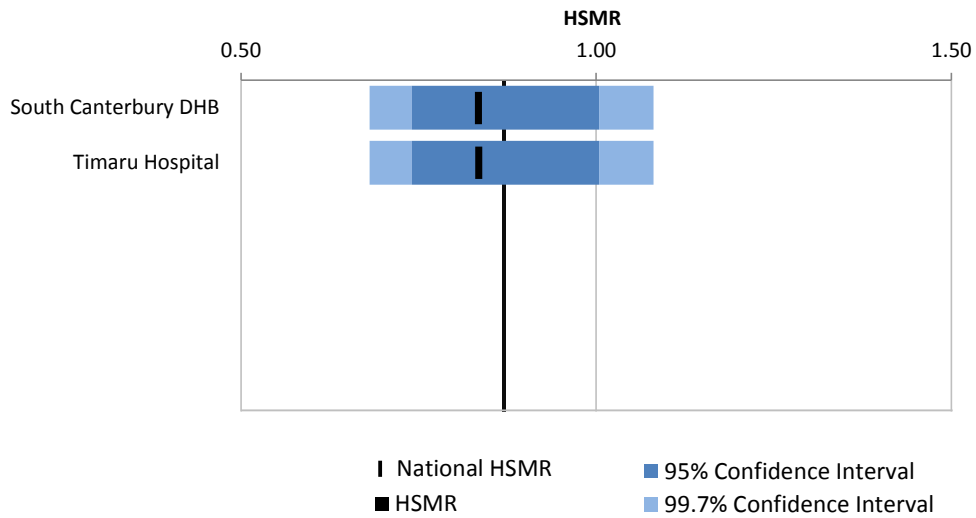


	Observed	Predicted	HSMR
National	11,735	13,514	0.87
Northland DHB	605	585	1.03
Whangarei Hospital	439	423	1.04
Bay of Islands Hospital	70	59	1.18
Kaitaia Hospital	61	63	0.96
Dargaville Hospital	34	38	0.90

Hospital Standardised Mortality Ratio by Year: South Canterbury DHB

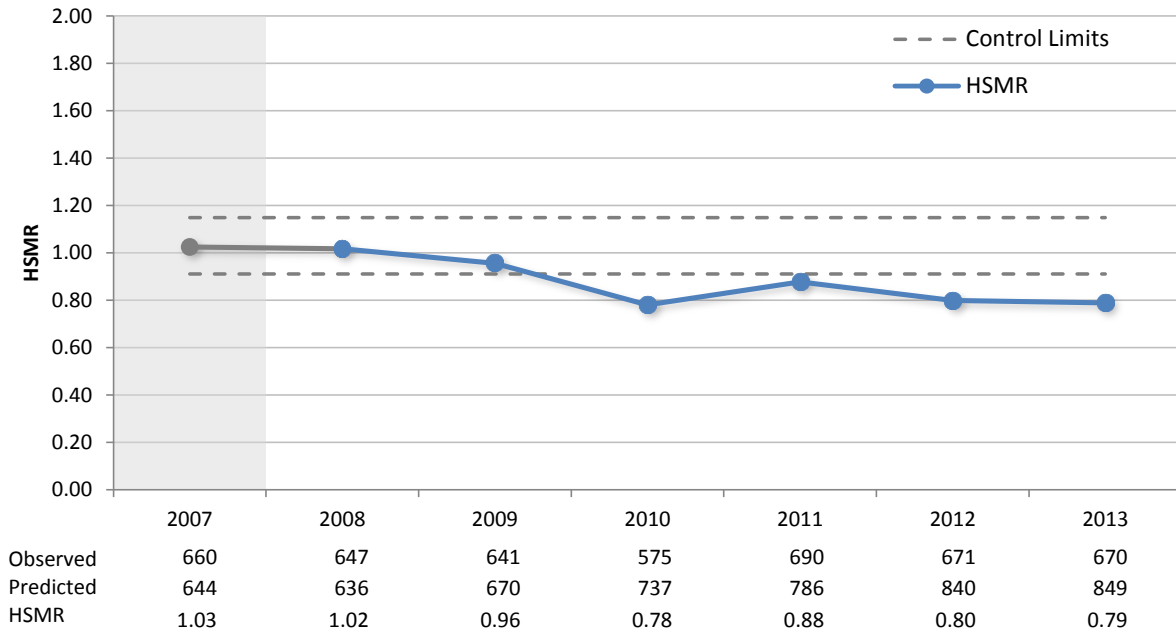


Hospital Standardised Mortality Ratio by Facility: South Canterbury DHB, 2013

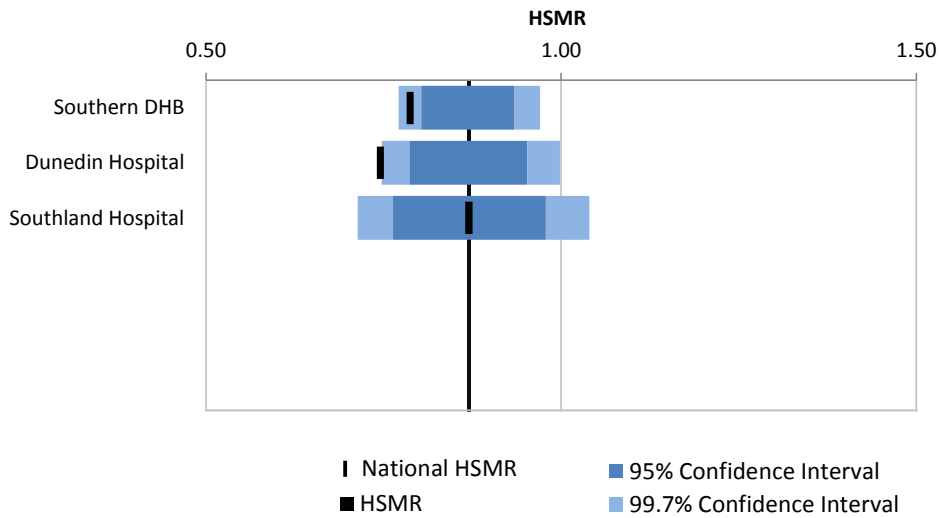


	Observed	Predicted	HSMR
National	11,735	13,514	0.87
South Canterbury DHB	166	199	0.84
Timaru Hospital	166	199	0.84

Hospital Standardised Mortality Ratio by Year: Southern DHB

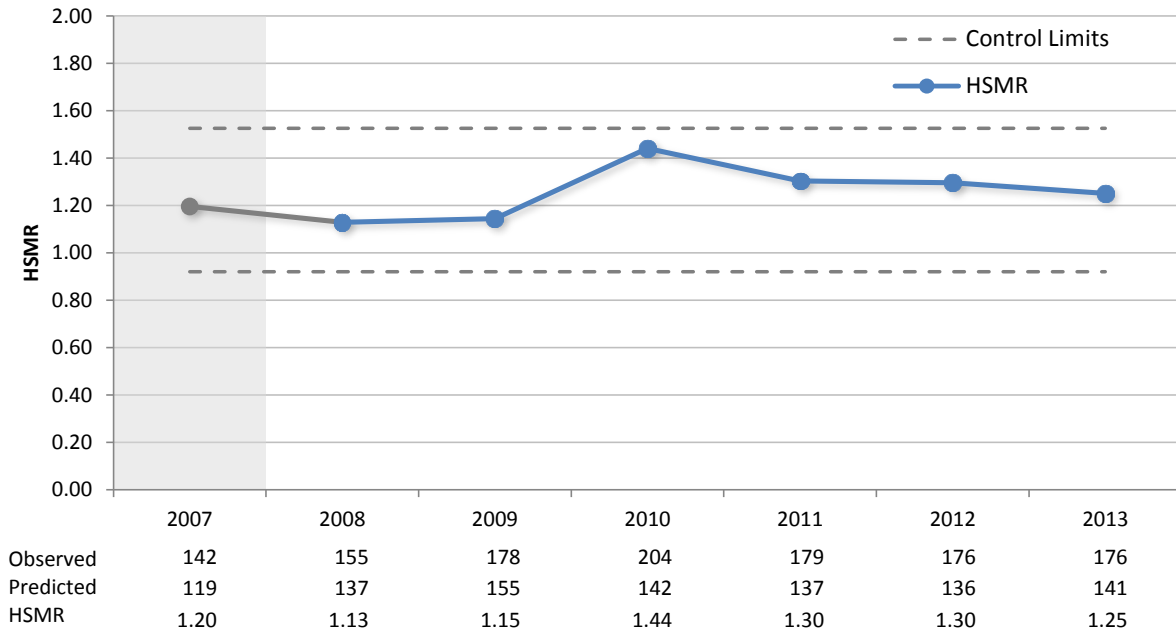


Hospital Standardised Mortality Ratio by Facility: Southern DHB, 2013

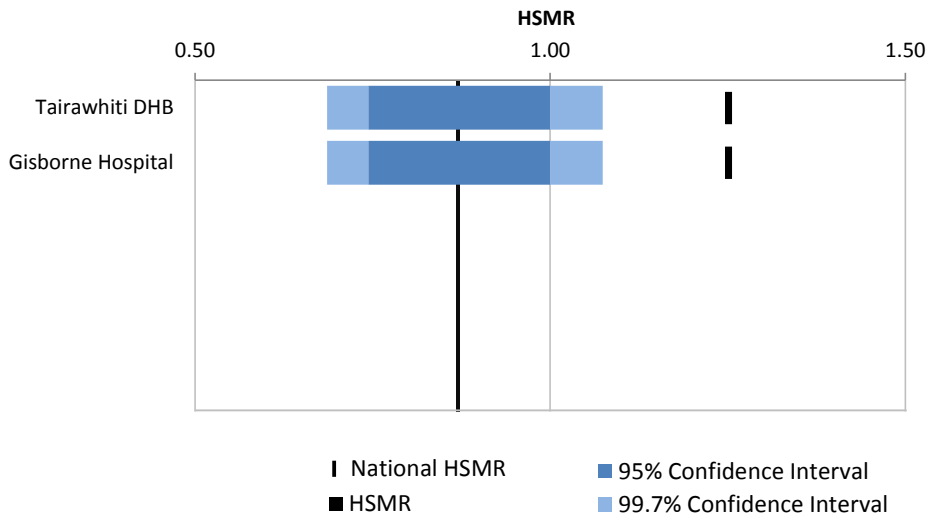


	Observed	Predicted	HSMR
National	11,735	13,514	0.87
Southern DHB	670	849	0.79
Dunedin Hospital	421	564	0.75
Southland Hospital	249	286	0.87

Hospital Standardised Mortality Ratio by Year: Tairawhiti DHB

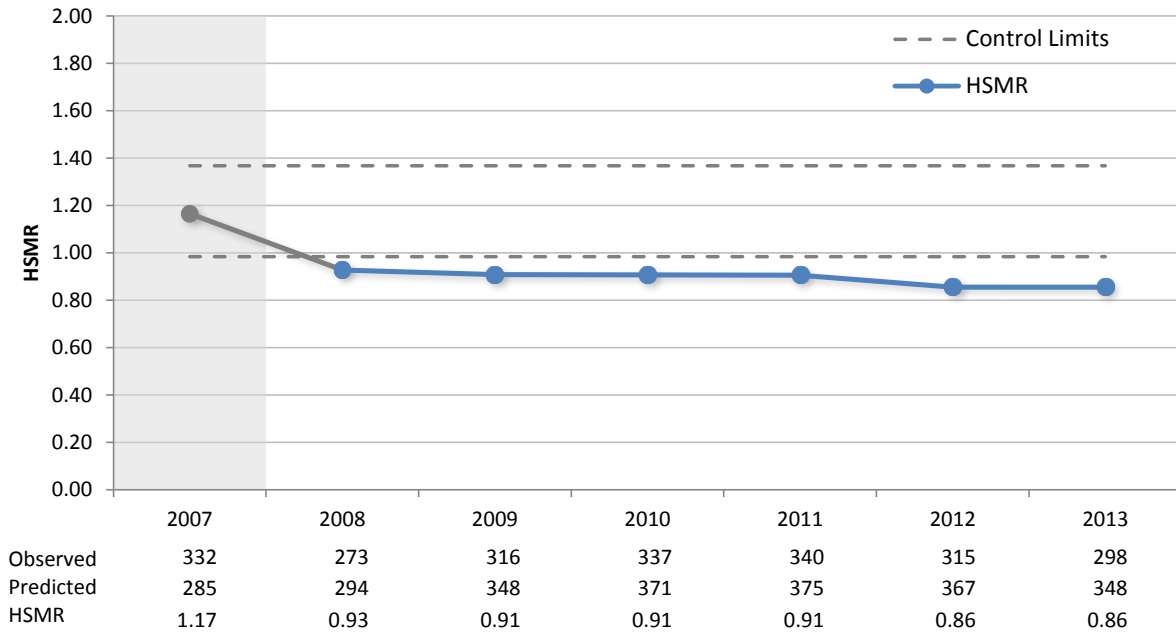


Hospital Standardised Mortality Ratio by Facility: Tairawhiti DHB, 2013

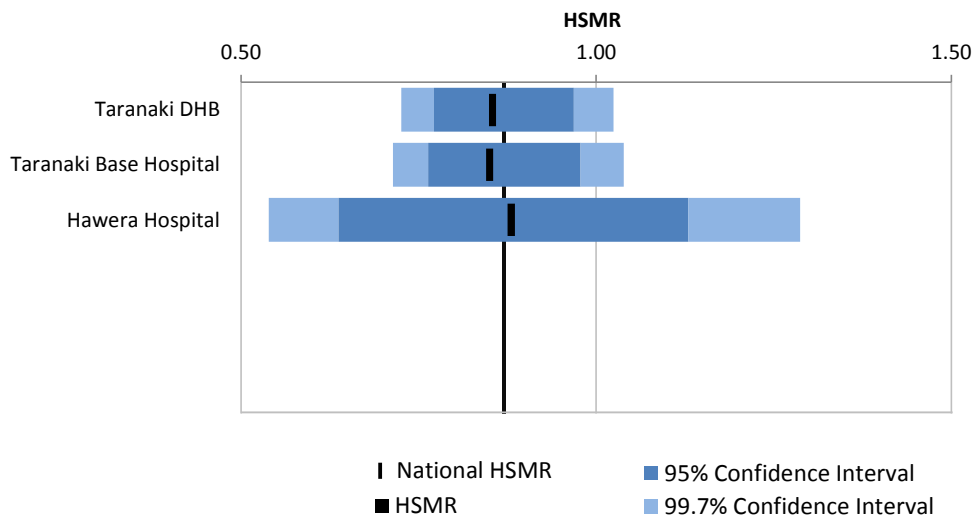


	Observed	Predicted	HSMR
National	11,735	13,514	0.87
Tairawhiti DHB	176	141	1.25
Gisborne Hospital	176	141	1.25

Hospital Standardised Mortality Ratio by Year: Taranaki DHB

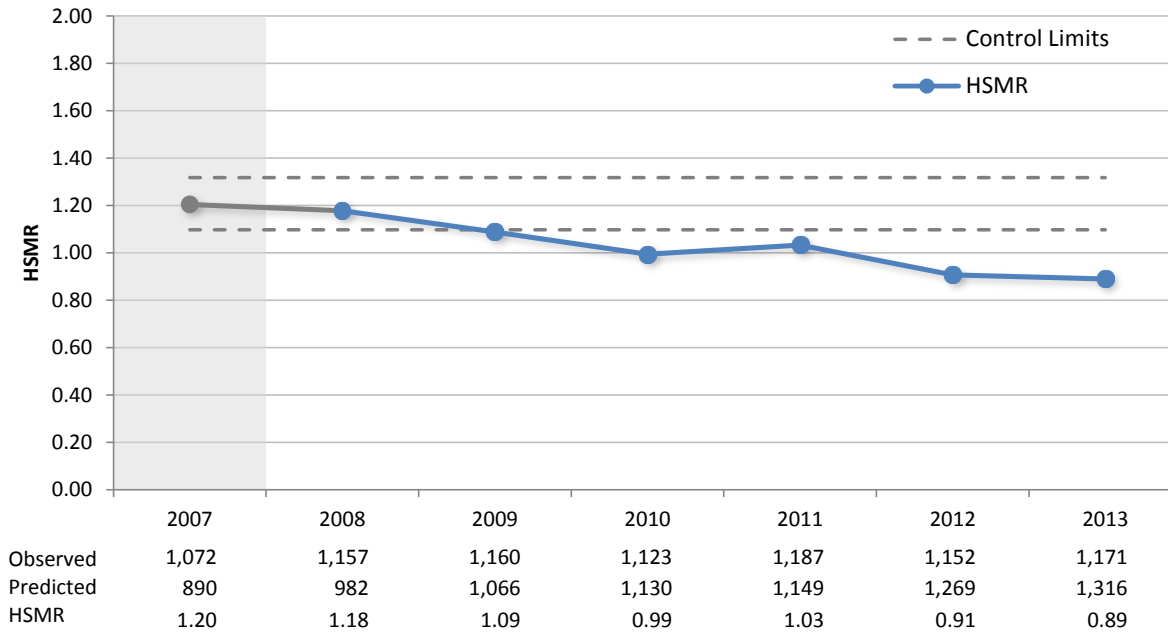


Hospital Standardised Mortality Ratio by Facility: Taranaki DHB, 2013

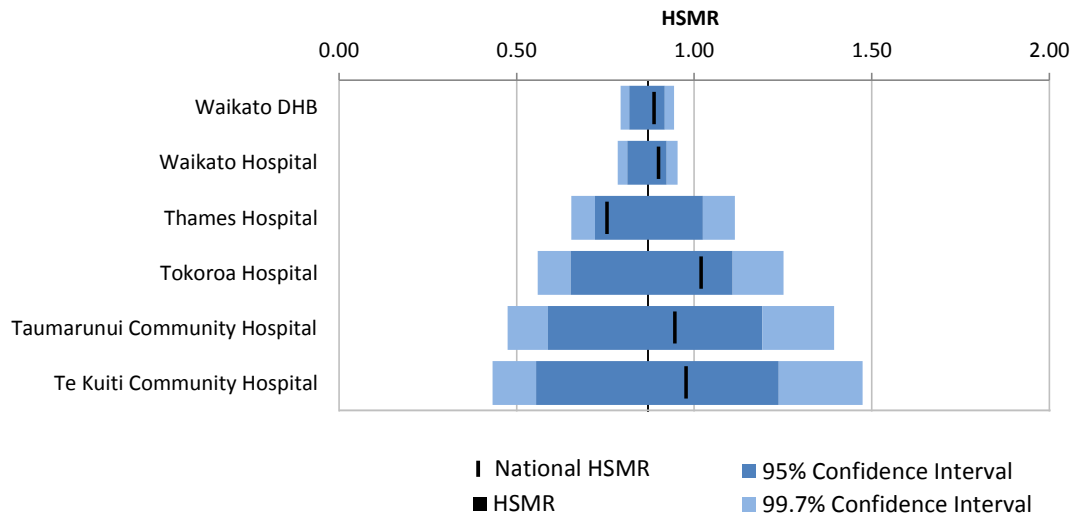


	Observed	Predicted	HSMR
National	11,735	13,514	0.87
Taranaki DHB	298	348	0.86
Taranaki Base Hospital	251	295	0.85
Hawera Hospital	47	53	0.88

Hospital Standardised Mortality Ratio by Year: Waikato DHB

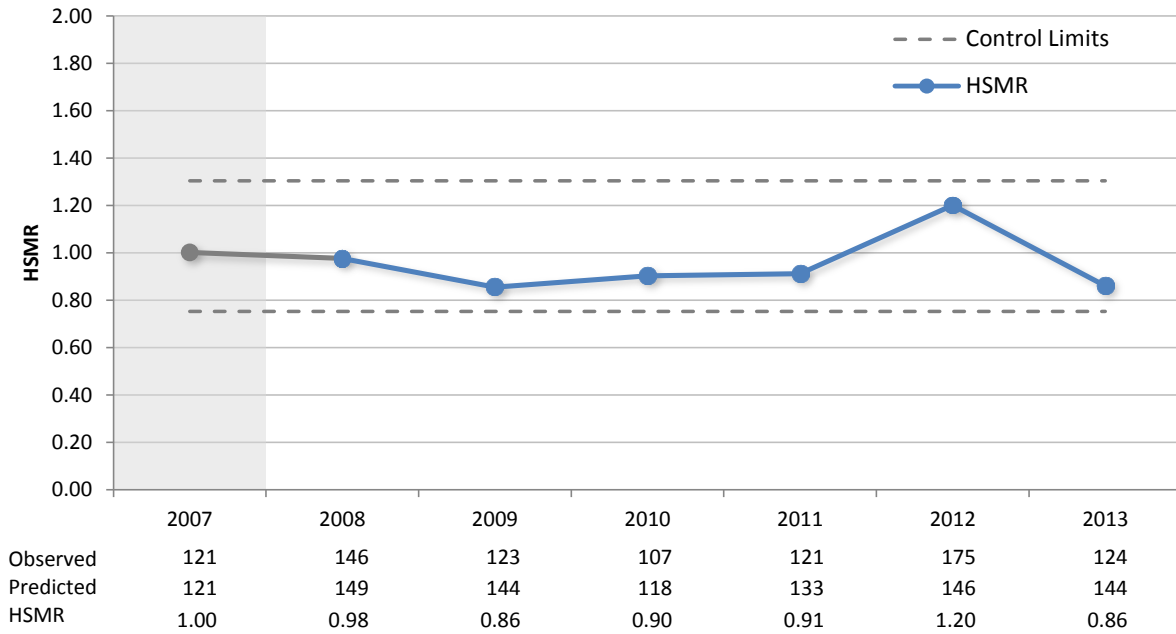


Hospital Standardised Mortality Ratio by Facility: Waikato DHB, 2013

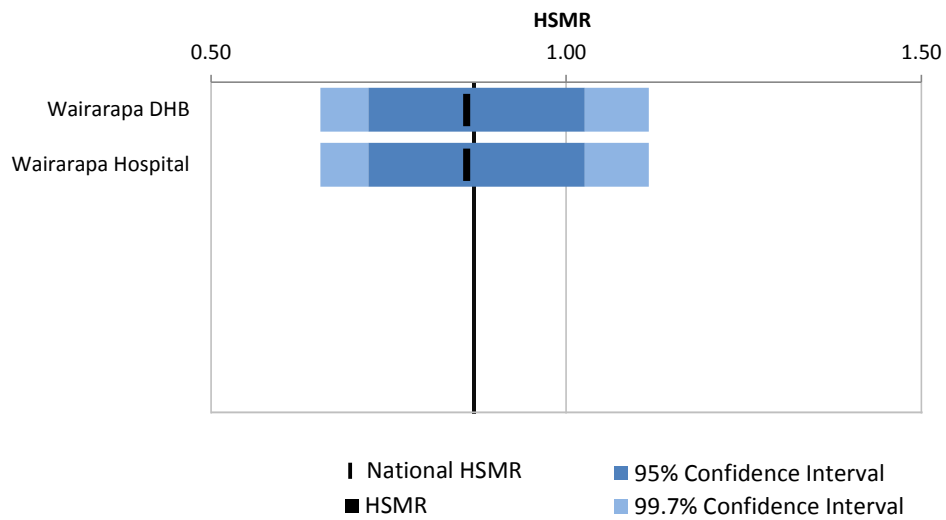


	Observed	Predicted	HSMR
National	11,735	13,514	0.87
Waikato DHB	1,171	1,316	0.89
Waikato Hospital	936	1,037	0.90
Thames Hospital	125	165	0.76
Tokoroa Hospital	55	54	1.02
Taumarunui Community Hospital	31	33	0.95
Te Kuiti Community Hospital	24	25	0.98

Hospital Standardised Mortality Ratio by Year: Wairarapa DHB

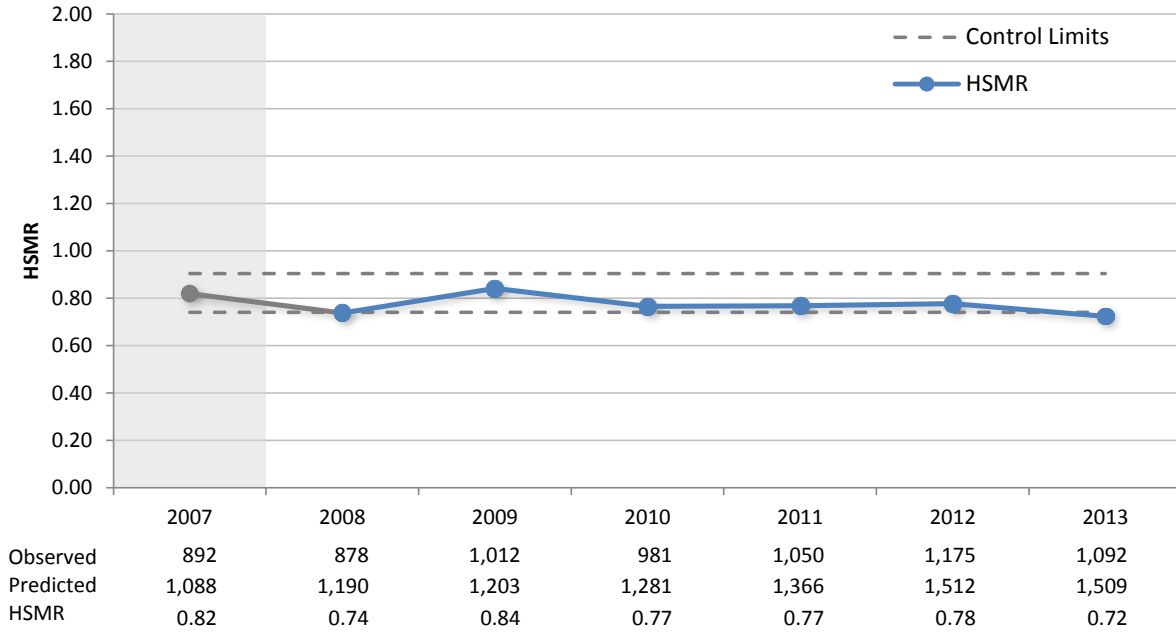


Hospital Standardised Mortality Ratio by Facility: Wairarapa DHB, 2013

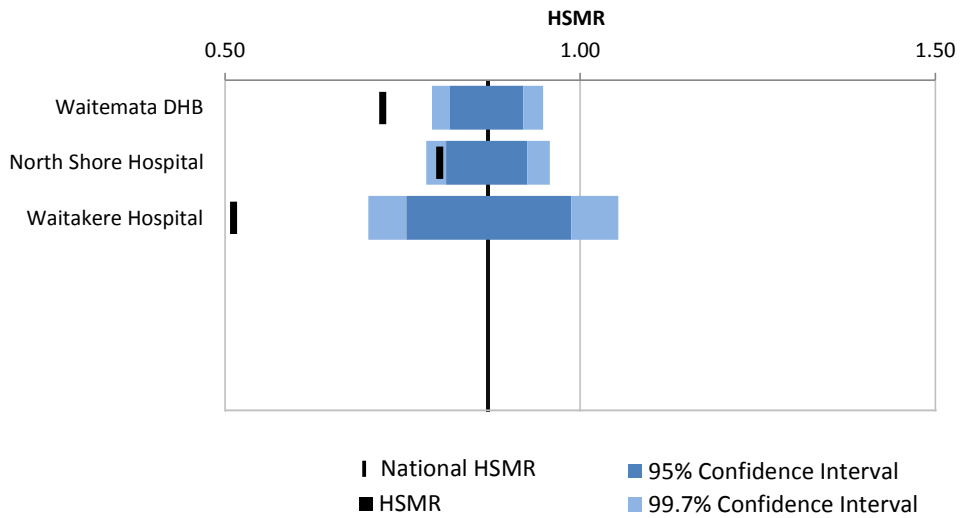


	Observed	Predicted	HSMR
National	11,735	13,514	0.87
Wairarapa DHB	124	144	0.86
Wairarapa Hospital	124	144	0.86

Hospital Standardised Mortality Ratio by Year: Waitemata DHB

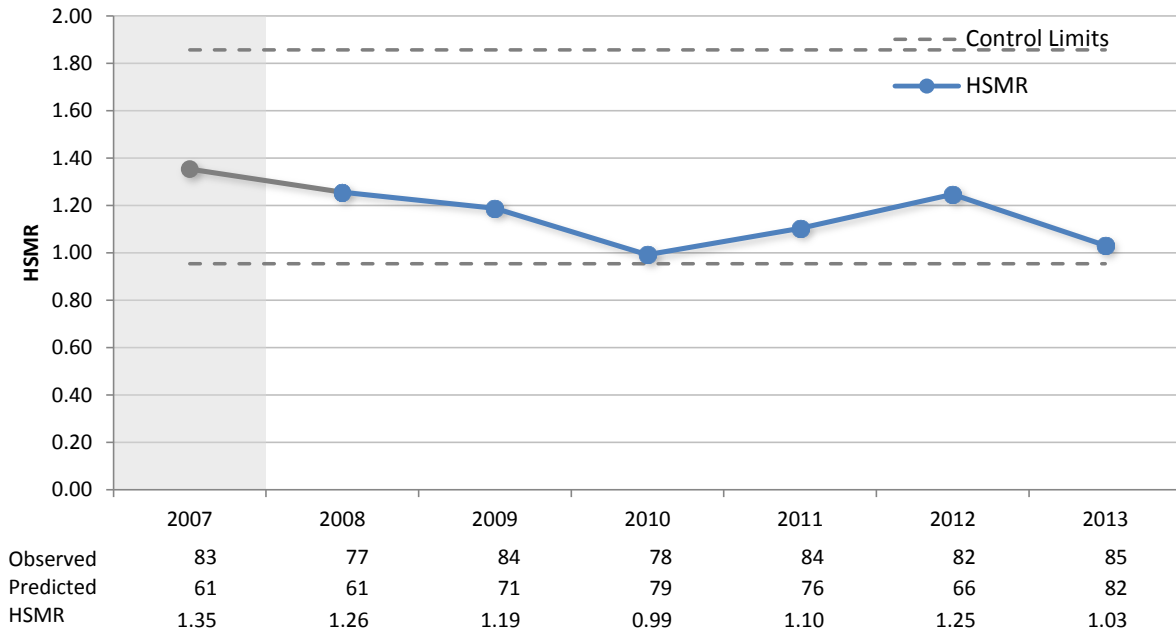


Hospital Standardised Mortality Ratio by Facility: Waitemata DHB, 2013

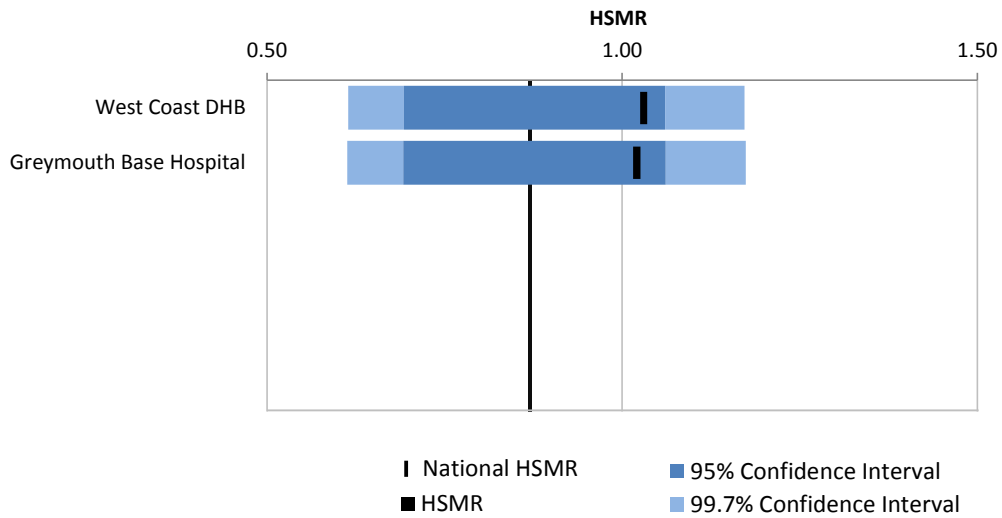


	Observed	Predicted	HSMR
National	11,735	13,514	0.87
Waitemata DHB	1,092	1,509	0.72
North Shore Hospital	878	1,093	0.80
Waitakere Hospital	214	416	0.51

Hospital Standardised Mortality Ratio by Year: West Coast DHB

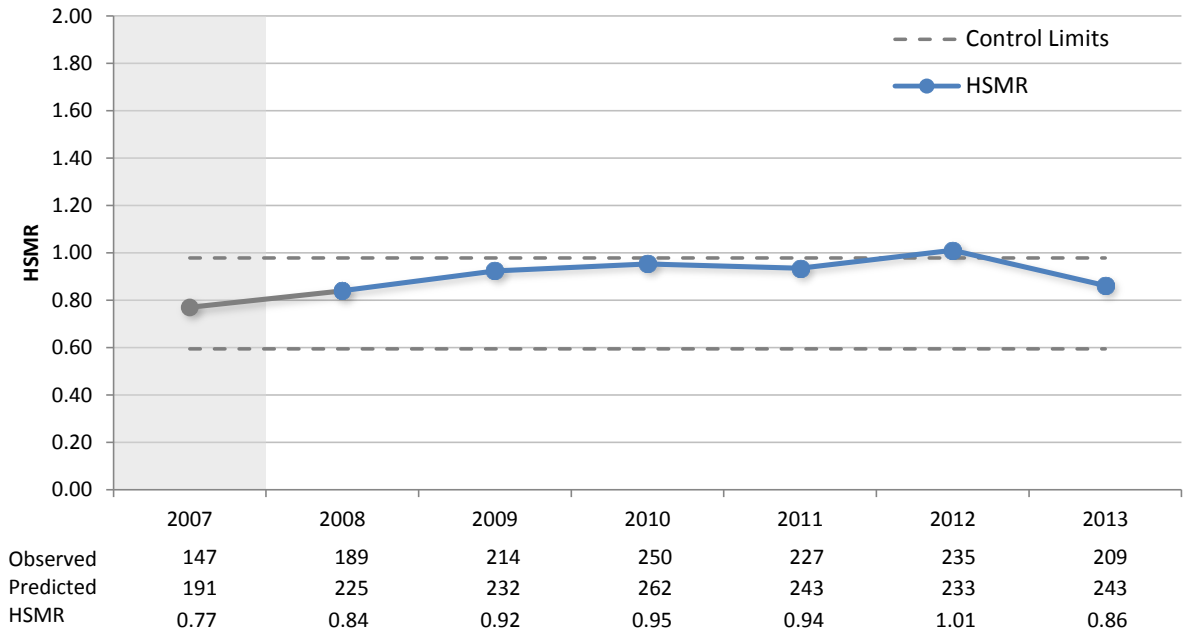


Hospital Standardised Mortality Ratio by Facility: West Coast DHB, 2013

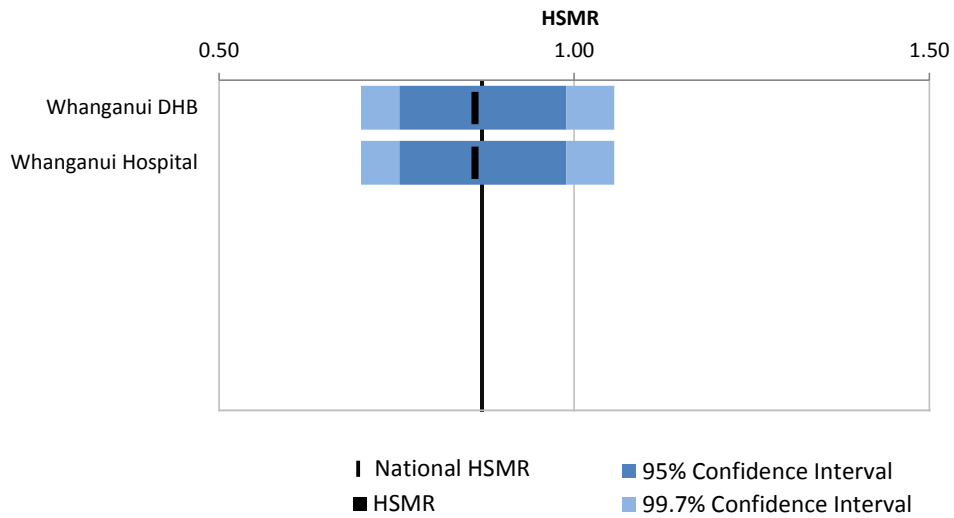


	Observed	Predicted	HSMR
National	11,735	13,514	0.87
West Coast DHB	85	82	1.03
Greymouth Base Hospital	84	82	1.02

Hospital Standardised Mortality Ratio by Year: Whanganui DHB



Hospital Standardised Mortality Ratio by Facility: Whanganui DHB, 2013



	Observed	Predicted	HSMR
National	11,735	13,514	0.87
Whanganui DHB	209	243	0.86
Whanganui Hospital	209	243	0.86