



# Me whakamahere i te wehenga i te hōhipera

Kei te hiahia ngā kaimahi hōhipera kia puta tino mōhio koe me ngā whakautu ki ngā pātai kei a koe. Ka āwhina tēnei pepa. Kua kōrerorero kētia pea ētahi kaupapa nā reira karekau pea he take ki a koe. He wāhi tuhi kōrero ina hiahia koe tō whānau rānei ki te tuhi kōrero.

## 1 Te wehenga i te hōhipera

- Mēnā he āwangawanga nōu, he pātai kāore anō kia whakahokia mō tō haumanu hauora, me kōrero ki tō tākuta, nēhi rānei.
- Tuhia ngā ingoa me ngā whakapānga o ngā tāngata ka hiahia koe ki te whakapā atu mō tō haumanu hauora i muri i tō wehenga i te hōhipera.

---



---



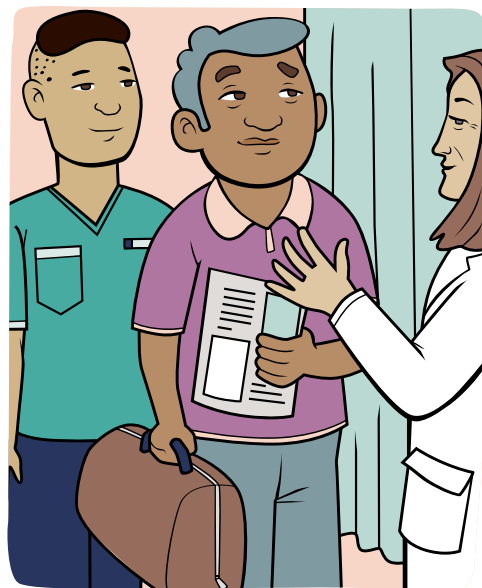
---



---

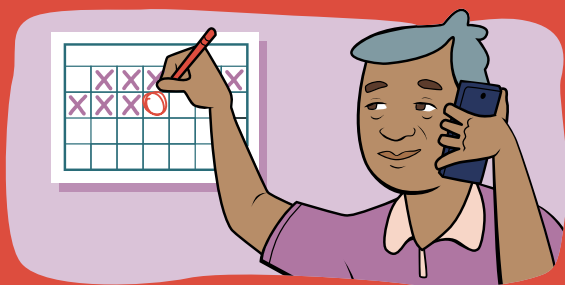


---



## 2 Ngā toronga whai muri

- Pātai atu ki tō tākuta, tō nēhi rānei ina hiahiatia kia hoki atu hei arowhai, hei whakamātautau rānei, ina āe, ki hea (ki te hōhipera, ki te whare tākuta rānei).
- Ki te hiahia koe ki te kite anō i tō tākuta whai muri i tō wehenga me mōhio koe mō āhea me te whakarite toronga.
- Ina tatari ana ki ngā hua whakamātautau, me rapu mō te pēhea e riro mai (hei tauira, ka waea atu tētahi ki a koe māu rānei e waea atu).




---



---



---



---



---



---



---



---



---



---

